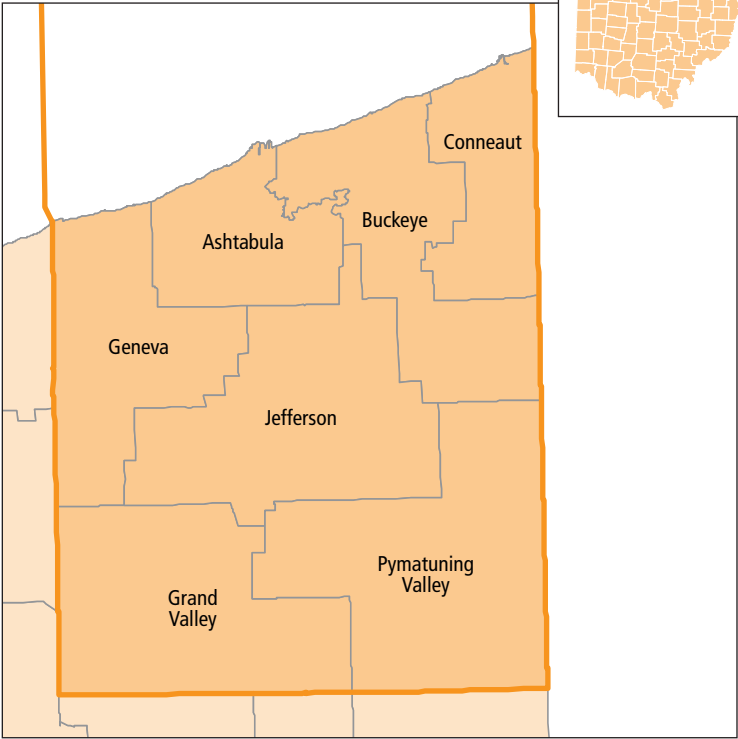
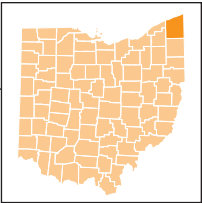


EARLY CHILDHOOD ADVISORY COUNCIL EARLY LEARNING AND DEVELOPMENT COUNTY PROFILE

Ashtabula County



Children with Special Needs - ODH and ODE

TOTAL POPULATION UNDER AGE 6¹	7,616	100.0%
Children with an active IFSP (under age 3) ²	98	1.3%
Preschool Special Education (PSE) enrollment (ages 3-5) ³	234	3.1%

Children Facing Economic Hardship - ODE and ODJFS

TOTAL CHILDREN COUNTED (UNDER AGE 6)^{4,5}	542	100.0%
Household income 100% to 199% FPL (low-income) ^{4,5}	150	27.7%
Household income below 100% FPL (in poverty) ^{4,5}	379	69.9%

Children with Limited English Proficiency - ODE and ODJFS

TOTAL CHILDREN COUNTED (UNDER AGE 6)^{4,5}	1,343	100.0%
English proficient ^{4,5}	1,337	99.6%
Limited English proficiency ^{4,5}	6	0.4%

Number of children for every:

Early learning and development program space

Accredited, quality-rated, Early Childhood Education (ECE), or Preschool Special Education (PSE) program space

Ashtabula County

State of Ohio

4.0

2.8

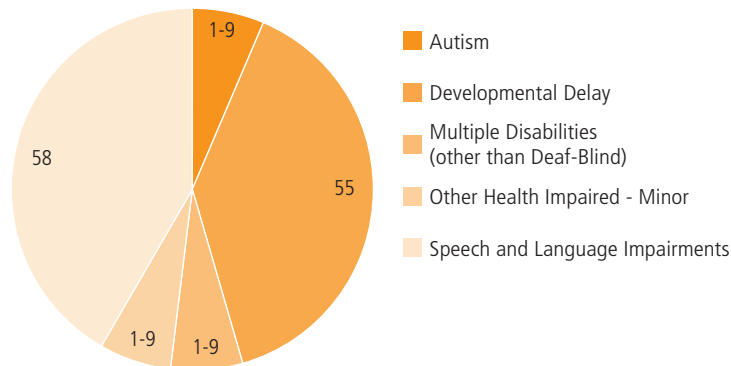
6.3

7.2



Of every 20 children in Ashtabula County, **11** are economically disadvantaged, including **6** living in poverty

Types of disabilities for children enrolled in Preschool Special Education (ages 3-5)¹⁰



SUPPLY

ODE - Licensed Sites

LICENSED PRESCHOOL SITES⁶ **8** **100.0%**

ODJFS - Certified/Licensed Providers

TOTAL CERTIFIED/LICENSED PROVIDERS⁵ **94** **100.0%**

Child care centers ⁵	25	26.6%
With infant spaces ⁵	10	40.0%
With toddler spaces ⁵	12	48.0%
With preschool spaces ⁵	25	100.0%
Type A home providers ⁵	2	2.1%
Type B home providers ⁵	35	37.2%
Limited providers ⁵	32	34.0%

ACCREDITATION AND QUALITY-RATING

CHILD CARE CENTERS SERVING UNDER AGE 6⁵ **25** **100.0%**

Not accredited or quality-rated ⁵	14	56.0%
Accredited or quality-rated ⁵	11	44.0%
3-star programs, Step Up to Quality ⁵	1	4.0%
2-star programs ⁵	4	16.0%
1-star programs ⁵	6	24.0%
Accredited programs ⁵	0	0.0%

ODE - Licensed Spaces

UNDER AGE 6 LICENSED SPACES⁷ **523** **100.0%**

ODE - Funded Spaces

EARLY CHILDHOOD EDUCATION (ECE) FUNDED SPACES³ **81** **100.0%**

ODJFS - Certified/Licensed Child Care Spaces

TOTAL CHILD CARE SPACES⁵ **1,710** **100.0%**

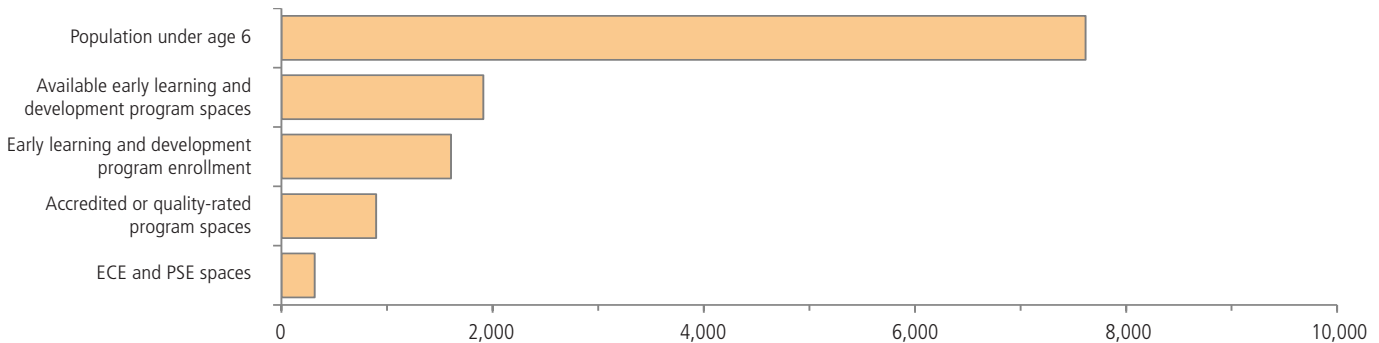
Child care centers ⁵	1,388	81.2%
Infant ⁵	128	9.2%
Toddler ⁵	304	21.9%
Preschool ⁵	956	68.9%
Type A home providers ⁵	24	1.4%
Type B home providers ⁵	204	11.9%
Limited providers ⁵	94	5.5%

ACCREDITATION AND QUALITY-RATING

UNDER AGE 6 CHILD CARE CENTER SPACES⁵ **1,388** **100.0%**

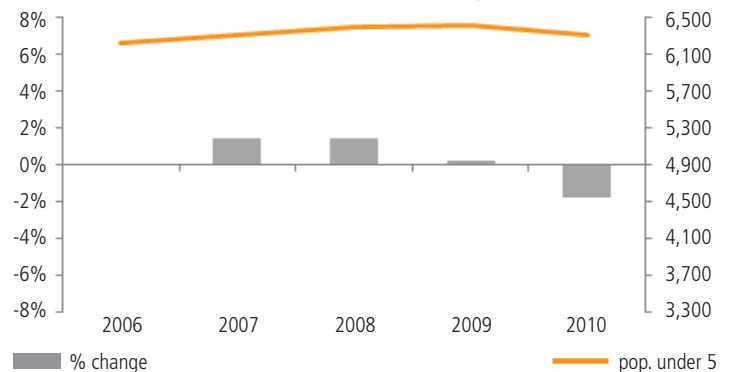
Not accredited or quality-rated ⁵	491	35.4%
Accredited or quality-rated programs ⁵	897	64.6%
3-star programs, Step Up to Quality ⁵	44	3.2%
2-star programs ⁵	345	24.9%
1-star programs ⁵	508	36.6%
Accredited programs ⁵	0	0.0%

Supply and demand for early learning and development program spaces serving children under age 6



Of the **1,911** early learning and development spaces, **1,212** or **63.4%** are in accredited, quality-rated, ECE, or PSE programs

Population trend, children under age 5¹²



DEMAND

ODE - Licensed Site Enrollment

UNDER AGE 6 ENROLLMENT⁷	446	100.0%
---	------------	---------------

ODJFS - Licensed Center Enrollment

UNDER AGE 6 ENROLLMENT⁵	1,158	100.0%
---	--------------	---------------

Head Start Enrollment

TOTAL HEAD START ENROLLMENT⁸	443	100.0%
Early Head Start (EHS) enrollment (under age 3) ⁸	72	16.3%
Head Start enrollment (ages 3 to 5) ⁸	371	83.7%

Children by Age

POPULATION UNDER AGE 6¹	7,616	100.0%
Population under age 3 ¹	3,725	48.9%
Population ages 3 to 5 ¹	3,891	51.1%
Change, 2000–2010 ¹	-534	-6.6%

Children by Race and Ethnicity

POPULATION UNDER AGE 6¹	7,616	100.0%
White (non-Hispanic) ¹	6,368	83.6%
Black or African American ¹	210	2.8%
Asian ¹	28	0.4%
Other race ¹	139	1.8%
Multiracial ¹	532	7.0%
Hispanic or Latino (of any race) ¹	576	7.6%

Living Arrangements by Householder

POPULATION UNDER AGE 6¹	7,616	100.0%
Parent (including step-parents and adoptive parents) ¹	6,385	83.8%
<i>Married parents (both present)¹</i>	4,053	53.2%
<i>Single parent¹</i>	2,332	30.6%
Other relative (including grandparent) ¹	1,031	13.5%
Non-relative (foster parent, group quarters, other) ¹	200	2.6%

Parental Employment

UNDER AGE 6 WITH PARENT HOUSEHOLDER⁹	7,076	100.0%
Both parents or only parent in labor force ⁹	4,597	65.0%
One parent in labor force, one not ⁹	1,530	21.6%
Neither parent in labor force ⁹	949	13.4%

Place of Birthplace and Nativity

UNDER AGE 6 WITH PARENT HOUSEHOLDER⁹	7,076	100.0%
Native-born with native-born parents ⁹	6,812	96.3%
Native-born with 1 or more foreign-born parents ⁹	257	3.6%
Foreign-born with native-born parents ⁹	0	0.0%
Foreign-born with 1 or more foreign-born parents ⁹	7	0.1%

Children with Special Needs

UNDER AGE 3 WITH ACTIVE IFSP	98	100.0%
Diagnosed physical or mental condition ²	48	49.0%
Developmental delay ²	50	51.0%
POPULATION AGES 3 TO 5¹	3,891	100.0%
Preschool Special Education (PSE) enrollment ³	234	6.0%
<i>Autism¹⁰</i>	1-9	-
<i>Cognitive disabilities¹⁰</i>	1-9	-
<i>Deafness (hearing impairments)¹⁰</i>	1-9	-
<i>Developmental delay¹⁰</i>	55	-
<i>Emotional disturbance (SBH)¹⁰</i>	1-9	-
<i>Multiple disabilities (other than deaf-blind)¹⁰</i>	1-9	-
<i>Orthopedic impairments¹⁰</i>	1-9	-
<i>Other health impaired - minor¹⁰</i>	1-9	-
<i>Specific learning disabilities¹⁰</i>	1-9	-
<i>Speech and language impairments¹⁰</i>	58	-

Children Facing Economic Hardship

POPULATION UNDER AGE 6⁹	7,277	100.0%
Not economically disadvantaged ⁹	3,098	42.6%
Household income 100% to 199% FPL (low-income) ⁹	2,059	28.3%
Household income below 100% FPL (in poverty) ⁹	2,120	29.1%
ODE - TOTAL CHILDREN COUNTED (AGES 3-5)⁴	138	100.0%
Not economically disadvantaged ⁴	13	9.4%
Household income 100% to 199% FPL (low-income) ⁴	25	18.1%
Household income below 100% FPL (in poverty) ⁴	100	72.5%
ODJFS - TOTAL CHILDREN COUNTED (UNDER AGE 6)⁵	404	100.0%
Not economically disadvantaged ⁵	0	0.0%
Household income 100% to 199% FPL (low-income) ⁵	125	30.9%
Household income below 100% FPL (in poverty) ⁵	279	69.1%

Children with Limited English Proficiency

ODE - TOTAL CHILDREN COUNTED (AGES 3-5)⁴	185	100.0%
English proficient ⁴	185	100.0%
Limited English proficiency ⁴	0	0.0%
ODJFS - TOTAL CHILDREN COUNTED (UNDER AGE 6)⁵	1,158	100.0%
English primary language ⁵	1,152	99.5%
Non-English primary language eligible ⁵	6	0.5%
<i>Non-English primary language utilization⁵</i>	6	0.5%

Kindergarten Readiness

STUDENTS TESTED FOR KRA-L¹¹	1,105	100.0%
Students scoring in KRA-L Band 1 ¹¹ (requiring intensive intervention and instruction)	265	24.0%

SELECTED INDICATORS BY SCHOOL DISTRICT, population under age 6

School district	Population under age 6	Economically disadvantaged	ODE spaces	ODE enrollment	ODJFS spaces	ODJFS enrollment
Ashtabula	2,597	67.7%	185	234	459	433
Buckeye	634	47.8%	43	19	193	130
Conneaut	955	66.7%	56	50	150	165
Geneva	1,243	45.1%	133	49	262	172
Grand Valley	857	56.7%	36	26	73	52
Jefferson	533	34.7%	34	40	209	130
Pymatuning Valley	458	54.4%	36	28	42	76

For assistance interpreting the data in this county profile and detailed information about the sources and caveats, please review the [User Guide](#)

Sources

1. U.S. Census Bureau, Decennial, Census, 2010
2. Ohio Department of Health, Help Me Grow Early Intervention Child Count, July 2012
3. Ohio Department of Education, December, 2011 Child Counts
4. Ohio Department of Education, Spring Fiscal Year, 2012
5. Ohio Department of Jobs and Family Services, November, 2012
6. Ohio Department of Education, Active sites as of January 2013
7. Ohio Department of Education, Preschool Capacity and Enrollment, November 2012
8. Head Start, School Year, 2012-2013
9. U.S. Census Bureau, American Community Survey, 2007-2011, 5-year estimate
10. Ohio Department of Education, School Year 2011-2012
11. Ohio Department of Education, Interactive Local Report Card, School Year 2010-2011
12. U.S. Census Bureau, Intercensal Population Estimates, 2000-2010