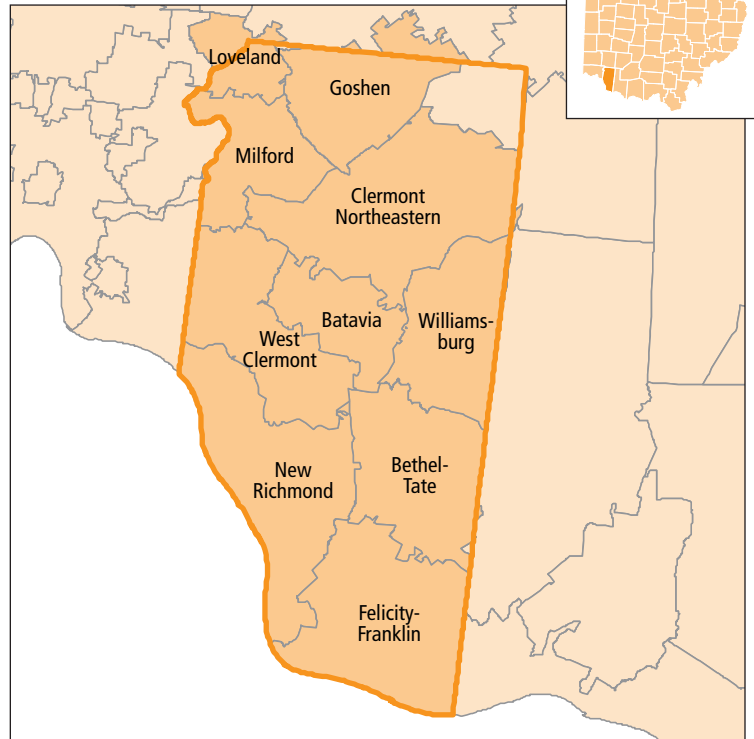
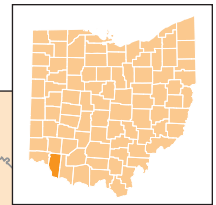


EARLY CHILDHOOD ADVISORY COUNCIL EARLY LEARNING AND DEVELOPMENT COUNTY PROFILE

Clermont County



Children with Special Needs - ODH and ODE		
TOTAL POPULATION UNDER AGE 6¹	16,373	100.0%
Children with an active IFSP (under age 3) ²	193	1.2%
Preschool Special Education (PSE) enrollment (ages 3-5) ³	453	2.8%
Children Facing Economic Hardship - ODE and ODJFS		
TOTAL CHILDREN COUNTED (UNDER AGE 6)^{4,5}	946	100.0%
Household income 100% to 199% FPL (low-income) ^{4,5}	406	42.9%
Household income below 100% FPL (in poverty) ^{4,5}	469	49.6%
Children with Limited English Proficiency - ODE and ODJFS		
TOTAL CHILDREN COUNTED (UNDER AGE 6)^{4,5}	3,221	100.0%
English proficient ^{4,5}	3,216	99.8%
Limited English proficiency ^{4,5}	5	0.2%

Number of children for every:

Early learning and development program space

Accredited, quality-rated, Early Childhood Education (ECE), or Preschool Special Education (PSE) program space

Clermont County

State of Ohio

3.2

2.8

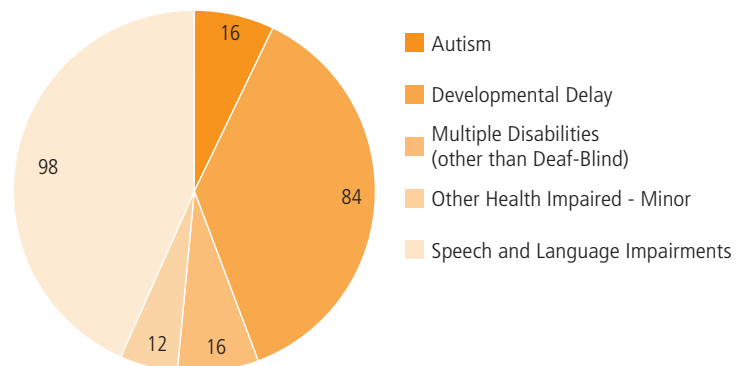
9.4

7.2



Of every 20 children in Clermont County,
7 are economically disadvantaged,
including **3** living in poverty

Types of disabilities for children enrolled in Preschool Special Education (ages 3-5)¹⁰



SUPPLY

ODE - Licensed Sites

LICENSED PRESCHOOL SITES⁶ **24** **100.0%**

ODJFS - Certified/Licensed Providers

TOTAL CERTIFIED/LICENSED PROVIDERS⁵ **67** **100.0%**

Child care centers ⁵	57	85.1%
With infant spaces ⁵	31	54.4%
With toddler spaces ⁵	38	66.7%
With preschool spaces ⁵	57	100.0%
Type A home providers ⁵	2	3.0%
Type B home providers ⁵	7	10.4%
Limited providers ⁵	1	1.5%

ACCREDITATION AND QUALITY-RATING

CHILD CARE CENTERS SERVING UNDER AGE 6⁵ **57** **100.0%**

Not accredited or quality-rated ⁵	32	56.1%
Accredited or quality-rated ⁵	25	43.9%
3-star programs, Step Up to Quality ⁵	10	17.5%
2-star programs ⁵	6	10.5%
1-star programs ⁵	9	15.8%
Accredited programs ⁵	0	0.0%

ODE - Licensed Spaces

UNDER AGE 6 LICENSED SPACES⁷ **1,662** **100.0%**

ODE - Funded Spaces

EARLY CHILDHOOD EDUCATION (ECE) FUNDED SPACES³ **20** **100.0%**

ODJFS - Certified/Licensed Child Care Spaces

TOTAL CHILD CARE SPACES⁵ **3,574** **100.0%**

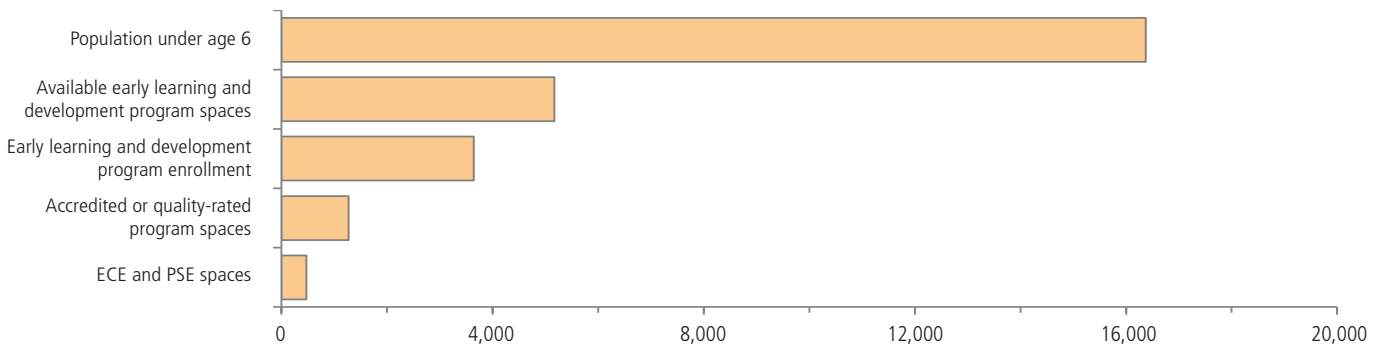
Child care centers ⁵	3,504	98.0%
Infant ⁵	421	12.0%
Toddler ⁵	801	22.9%
Preschool ⁵	2,282	65.1%
Type A home providers ⁵	22	0.6%
Type B home providers ⁵	42	1.2%
Limited providers ⁵	6	0.2%

ACCREDITATION AND QUALITY-RATING

UNDER AGE 6 CHILD CARE CENTER SPACES⁵ **3,504** **100.0%**

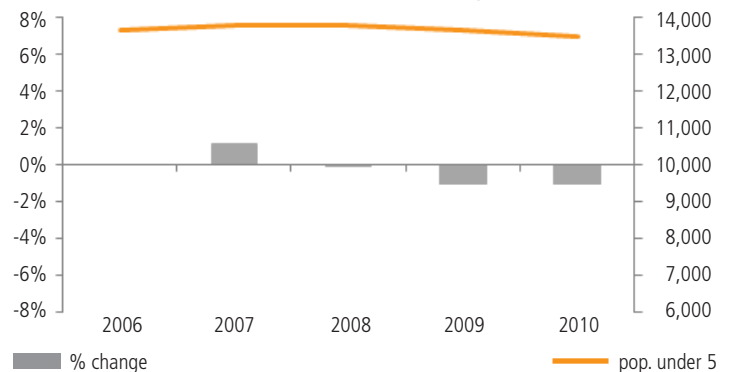
Not accredited or quality-rated ⁵	2,234	63.8%
Accredited or quality-rated programs ⁵	1,270	36.2%
3-star programs, Step Up to Quality ⁵	224	6.4%
2-star programs ⁵	529	15.1%
1-star programs ⁵	517	14.8%
Accredited programs ⁵	0	0.0%

Supply and demand for early learning and development program spaces serving children under age 6



Of the **5,166** early learning and development spaces, **1,743** or **33.7%** are in accredited, quality-rated, ECE, or PSE programs

Population trend, children under age 5¹²



DEMAND

ODE - Licensed Site Enrollment

UNDER AGE 6 ENROLLMENT⁷	1,073	100.0%
---	--------------	---------------

ODJFS - Licensed Center Enrollment

UNDER AGE 6 ENROLLMENT⁵	2,568	100.0%
---	--------------	---------------

Head Start Enrollment

TOTAL HEAD START ENROLLMENT⁸	568	100.0%
Early Head Start (EHS) enrollment (under age 3) ⁸	132	23.2%
Head Start enrollment (ages 3 to 5) ⁸	436	76.8%

Children by Age

POPULATION UNDER AGE 6¹	16,373	100.0%
Population under age 3 ¹	7,916	48.3%
Population ages 3 to 5 ¹	8,457	51.7%
Change, 2000–2010 ¹	102	0.6%

Children by Race and Ethnicity

POPULATION UNDER AGE 6¹	16,373	100.0%
White (non-Hispanic) ¹	14,839	90.6%
Black or African American ¹	226	1.4%
Asian ¹	222	1.4%
Other race ¹	156	1.0%
Multiracial ¹	626	3.8%
Hispanic or Latino (of any race) ¹	467	2.9%

Living Arrangements by Householder

POPULATION UNDER AGE 6¹	16,373	100.0%
Parent (including step-parents and adoptive parents) ¹	14,128	86.3%
<i>Married parents (both present)¹</i>	10,487	64.1%
<i>Single parent¹</i>	3,641	22.2%
Other relative (including grandparent) ¹	1,905	11.6%
Non-relative (foster parent, group quarters, other) ¹	340	2.1%

Parental Employment

UNDER AGE 6 WITH PARENT HOUSEHOLDER⁹	15,701	100.0%
Both parents or only parent in labor force ⁹	10,946	69.7%
One parent in labor force, one not ⁹	3,712	23.6%
Neither parent in labor force ⁹	1,043	6.6%

Place of Birth and Nativity

UNDER AGE 6 WITH PARENT HOUSEHOLDER⁹	15,701	100.0%
Native-born with native-born parents ⁹	14,811	94.3%
Native-born with 1 or more foreign-born parents ⁹	756	4.8%
Foreign-born with native-born parents ⁹	92	0.6%
Foreign-born with 1 or more foreign-born parents ⁹	42	0.3%

Children with Special Needs

UNDER AGE 3 WITH ACTIVE IFSP	193	100.0%
Diagnosed physical or mental condition ²	105	54.4%
Developmental delay ²	88	45.6%
POPULATION AGES 3 TO 5¹	8,457	100.0%
Preschool Special Education (PSE) enrollment ³	453	5.4%
<i>Autism¹⁰</i>	16	-
<i>Cognitive disabilities¹⁰</i>	1-9	-
<i>Deafness (hearing impairments)¹⁰</i>	1-9	-
<i>Developmental delay¹⁰</i>	84	-
<i>Emotional disturbance (SBH)¹⁰</i>	1-9	-
<i>Multiple disabilities (other than deaf-blind)¹⁰</i>	16	-
<i>Orthopedic impairments¹⁰</i>	1-9	-
<i>Other health impaired - minor¹⁰</i>	12	-
<i>Specific learning disabilities¹⁰</i>	1-9	-
<i>Speech and language impairments¹⁰</i>	98	-

Children Facing Economic Hardship

POPULATION UNDER AGE 6⁹	15,901	100.0%
Not economically disadvantaged ⁹	10,474	65.9%
Household income 100% to 199% FPL (low-income) ⁹	3,091	19.4%
Household income below 100% FPL (in poverty) ⁹	2,336	14.7%

ODE - TOTAL CHILDREN COUNTED (AGES 3-5)⁴	418	100.0%
Not economically disadvantaged ⁴	68	16.3%
Household income 100% to 199% FPL (low-income) ⁴	182	43.5%
Household income below 100% FPL (in poverty) ⁴	168	40.2%

ODJFS - TOTAL CHILDREN COUNTED (UNDER AGE 6)⁵	528	100.0%
Not economically disadvantaged ⁵	3	0.6%
Household income 100% to 199% FPL (low-income) ⁵	224	42.4%
Household income below 100% FPL (in poverty) ⁵	301	57.0%

Children with Limited English Proficiency

ODE - TOTAL CHILDREN COUNTED (AGES 3-5)⁴	653	100.0%
English proficient ⁴	652	99.8%
Limited English proficiency ⁴	1	0.2%

ODJFS - TOTAL CHILDREN COUNTED (UNDER AGE 6)⁵	2,568	100.0%
English primary language ⁵	2,564	99.8%
Non-English primary language eligible ⁵	4	0.2%
<i>Non-English primary language utilization⁵</i>	4	0.2%

Kindergarten Readiness

STUDENTS TESTED FOR KRA-L¹¹	2,393	100.0%
Students scoring in KRA-L Band 1 ¹¹ (requiring intensive intervention and instruction)	422	17.6%

SELECTED INDICATORS BY SCHOOL DISTRICT, population under age 6

School district	Population under age 6	Economically disadvantaged	ODE spaces	ODE enrollment	ODJFS spaces	ODJFS enrollment
Batavia	1,029	53.5%	51	49	224	176
Bethel-Tate	615	44.2%	35	21	182	228
Clermont Northeastern	878	30.3%	34	46	57	87
Felicity-Franklin	157	20.4%	20	18	84	48
Goshen	1,225	51.2%	38	55	115	103
Loveland	2,355	12.1%	372	208	279	299
Milford	3,289	24.0%	548	251	1,134	801
New Richmond	1,002	49.7%	64	46	125	53
West Clermont	6,054	34.1%	486	365	1,533	979
Williamsburg	381	56.7%	14	14	56	49

For assistance interpreting the data in this county profile and detailed information about the sources and caveats, please review the [User Guide](#)

Sources

1. U.S. Census Bureau, Decennial, Census, 2010
2. Ohio Department of Health, Help Me Grow Early Intervention Child Count, July 2012
3. Ohio Department of Education, December, 2011 Child Counts
4. Ohio Department of Education, Spring Fiscal Year, 2012
5. Ohio Department of Jobs and Family Services, November, 2012
6. Ohio Department of Education, Active sites as of January 2013
7. Ohio Department of Education, Preschool Capacity and Enrollment, November 2012
8. Head Start, School Year, 2012-2013
9. U.S. Census Bureau, American Community Survey, 2007-2011, 5-year estimate
10. Ohio Department of Education, School Year 2011-2012
11. Ohio Department of Education, Interactive Local Report Card, School Year 2010-2011
12. U.S. Census Bureau, Intercensal Population Estimates, 2000-2010