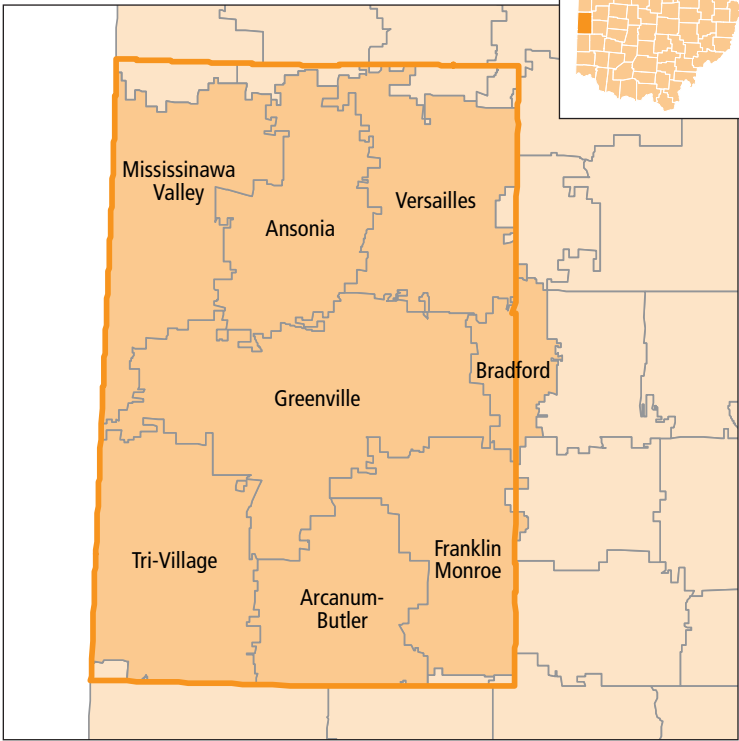


EARLY CHILDHOOD ADVISORY COUNCIL EARLY LEARNING AND DEVELOPMENT COUNTY PROFILE

Darke County



Children with Special Needs - ODH and ODE

TOTAL POPULATION UNDER AGE 6¹	4,225	100.0%
Children with an active IFSP (under age 3) ²	58	1.4%
Preschool Special Education (PSE) enrollment (ages 3-5) ³	123	2.9%

Children Facing Economic Hardship - ODE and ODJFS

TOTAL CHILDREN COUNTED (UNDER AGE 6)^{4,5}	367	100.0%
Household income 100% to 199% FPL (low-income) ^{4,5}	179	48.8%
Household income below 100% FPL (in poverty) ^{4,5}	130	35.4%

Children with Limited English Proficiency - ODE and ODJFS

TOTAL CHILDREN COUNTED (UNDER AGE 6)^{4,5}	748	100.0%
English proficient ^{4,5}	746	99.7%
Limited English proficiency ^{4,5}	2	0.3%

Number of children for every:

Early learning and development program space

Accredited, quality-rated, Early Childhood Education (ECE), or Preschool Special Education (PSE) program space

Darke County

4.0

14.8

State of Ohio

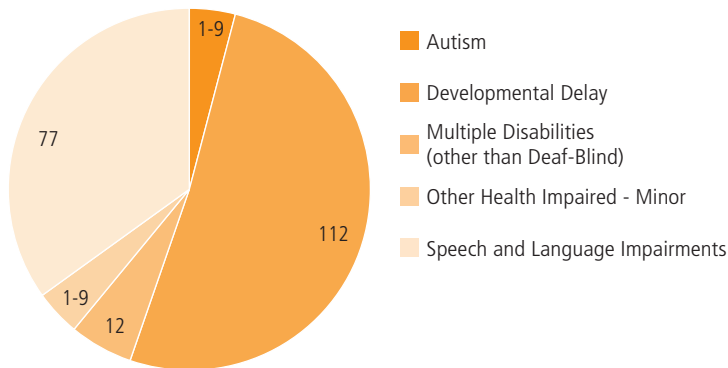
2.8

7.2



Of every 20 children in Darke County,
9 are economically disadvantaged,
including **3** living in poverty

Types of disabilities for children enrolled in Preschool Special Education (ages 3-5)¹⁰



SUPPLY

ODE - Licensed Sites

LICENSED PRESCHOOL SITES⁶ **8** **100.0%**

ODJFS - Certified/Licensed Providers

TOTAL CERTIFIED/LICENSED PROVIDERS⁵ **17** **100.0%**

Child care centers ⁵	8	47.1%
With infant spaces ⁵	4	50.0%
With toddler spaces ⁵	4	50.0%
With preschool spaces ⁵	8	100.0%
Type A home providers ⁵	0	0.0%
Type B home providers ⁵	8	47.1%
Limited providers ⁵	1	5.9%

ACCREDITATION AND QUALITY-RATING

CHILD CARE CENTERS SERVING UNDER AGE 6⁵ **8** **100.0%**

Not accredited or quality-rated ⁵	6	75.0%
Accredited or quality-rated ⁵	2	25.0%
3-star programs, Step Up to Quality ⁵	1	12.5%
2-star programs ⁵	1	12.5%
1-star programs ⁵	0	0.0%
Accredited programs ⁵	0	0.0%

ODE - Licensed Spaces

UNDER AGE 6 LICENSED SPACES⁷ **658** **100.0%**

ODE - Funded Spaces

EARLY CHILDHOOD EDUCATION (ECE) FUNDED SPACES³ **46** **100.0%**

ODJFS - Certified/Licensed Child Care Spaces

TOTAL CHILD CARE SPACES⁵ **439** **100.0%**

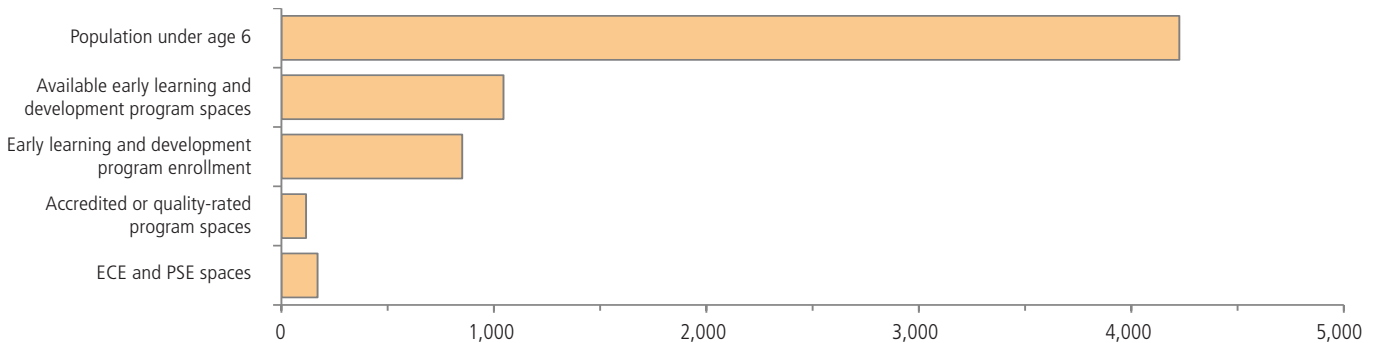
Child care centers ⁵	386	87.9%
Infant ⁵	55	14.2%
Toddler ⁵	74	19.2%
Preschool ⁵	257	66.6%
Type A home providers ⁵	0	0.0%
Type B home providers ⁵	47	10.7%
Limited providers ⁵	6	1.4%

ACCREDITATION AND QUALITY-RATING

UNDER AGE 6 CHILD CARE CENTER SPACES⁵ **386** **100.0%**

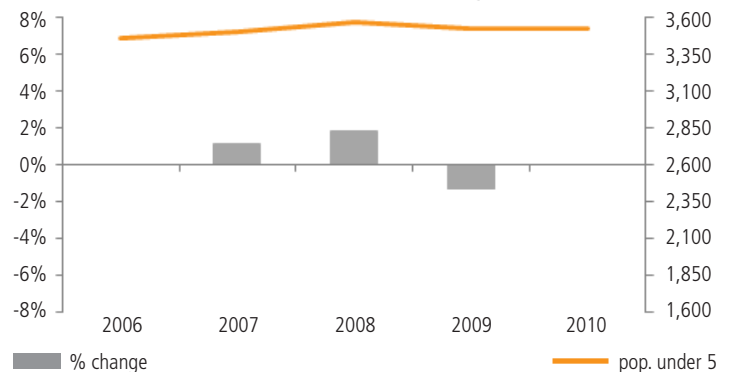
Not accredited or quality-rated ⁵	270	69.9%
Accredited or quality-rated programs ⁵	116	30.1%
3-star programs, Step Up to Quality ⁵	96	24.9%
2-star programs ⁵	20	5.2%
1-star programs ⁵	0	0.0%
Accredited programs ⁵	0	0.0%

Supply and demand for early learning and development program spaces serving children under age 6



Of the **1,044** early learning and development spaces, **285** or **27.3%** are in accredited, quality-rated, ECE, or PSE programs

Population trend, children under age 5¹²



DEMAND

ODE - Licensed Site Enrollment

UNDER AGE 6 ENROLLMENT ⁷	469	100.0%
-------------------------------------	-----	--------

ODJFS - Licensed Center Enrollment

UNDER AGE 6 ENROLLMENT ⁵	381	100.0%
-------------------------------------	-----	--------

Head Start Enrollment

TOTAL HEAD START ENROLLMENT ⁸	138	100.0%
Early Head Start (EHS) enrollment (under age 3) ⁸	24	17.4%
Head Start enrollment (ages 3 to 5) ⁸	114	82.6%

Children by Age

POPULATION UNDER AGE 6 ¹	4,225	100.0%
Population under age 3 ¹	2,117	50.1%
Population ages 3 to 5 ¹	2,108	49.9%
Change, 2000–2010 ¹	-103	-2.4%

Children by Race and Ethnicity

POPULATION UNDER AGE 6 ¹	4,225	100.0%
White (non-Hispanic) ¹	3,981	94.2%
Black or African American ¹	33	0.8%
Asian ¹	11	0.3%
Other race ¹	41	1.0%
Multiracial ¹	86	2.0%
Hispanic or Latino (of any race) ¹	108	2.6%

Living Arrangements by Householder

POPULATION UNDER AGE 6 ¹	4,225	100.0%
Parent (including step-parents and adoptive parents) ¹	3,749	88.7%
Married parents (both present) ¹	2,852	67.5%
Single parent ¹	897	21.2%
Other relative (including grandparent) ¹	389	9.2%
Non-relative (foster parent, group quarters, other) ¹	87	2.1%

Parental Employment

UNDER AGE 6 WITH PARENT HOUSEHOLDER ⁹	3,962	100.0%
Both parents or only parent in labor force ⁹	2,768	69.9%
One parent in labor force, one not ⁹	1,000	25.2%
Neither parent in labor force ⁹	194	4.9%

Place of Birth and Nativity

UNDER AGE 6 WITH PARENT HOUSEHOLDER ⁹	3,962	100.0%
Native-born with native-born parents ⁹	3,874	97.8%
Native-born with 1 or more foreign-born parents ⁹	80	2.0%
Foreign-born with native-born parents ⁹	8	0.2%
Foreign-born with 1 or more foreign-born parents ⁹	0	0.0%

Children with Special Needs

UNDER AGE 3 WITH ACTIVE IFSP	58	100.0%
Diagnosed physical or mental condition ²	31	53.4%
Developmental delay ²	27	46.6%
POPULATION AGES 3 TO 5 ¹	2,108	100.0%
Preschool Special Education (PSE) enrollment ³	123	5.8%
Autism ¹⁰	1-9	-
Cognitive disabilities ¹⁰	1-9	-
Deafness (hearing impairments) ¹⁰	1-9	-
Developmental delay ¹⁰	112	-
Emotional disturbance (SBH) ¹⁰	1-9	-
Multiple disabilities (other than deaf-blind) ¹⁰	12	-
Orthopedic impairments ¹⁰	0	-
Other health impaired - minor ¹⁰	1-9	-
Specific learning disabilities ¹⁰	0	-
Speech and language impairments ¹⁰	77	-

Children Facing Economic Hardship

POPULATION UNDER AGE 6 ⁹	4,065	100.0%
Not economically disadvantaged ⁹	2,239	55.1%
Household income 100% to 199% FPL (low-income) ⁹	1,189	29.2%
Household income below 100% FPL (in poverty) ⁹	637	15.7%

ODE - TOTAL CHILDREN COUNTED (AGES 3-5) ⁴	322	100.0%
Not economically disadvantaged ⁴	58	18.0%
Household income 100% to 199% FPL (low-income) ⁴	159	49.4%
Household income below 100% FPL (in poverty) ⁴	105	32.6%

ODJFS - TOTAL CHILDREN COUNTED (UNDER AGE 6) ⁵	45	100.0%
Not economically disadvantaged ⁵	0	0.0%
Household income 100% to 199% FPL (low-income) ⁵	20	44.4%
Household income below 100% FPL (in poverty) ⁵	25	55.6%

Children with Limited English Proficiency

ODE - TOTAL CHILDREN COUNTED (AGES 3-5) ⁴	367	100.0%
English proficient ⁴	367	100.0%
Limited English proficiency ⁴	0	0.0%

ODJFS - TOTAL CHILDREN COUNTED (UNDER AGE 6) ⁵	381	100.0%
English primary language ⁵	379	99.5%
Non-English primary language eligible ⁵	2	0.5%
Non-English primary language utilization ⁵	1	0.3%

Kindergarten Readiness

STUDENTS TESTED FOR KRA-L ¹¹	633	100.0%
Students scoring in KRA-L Band 1 ¹¹ (requiring intensive intervention and instruction)	121	19.1%

SELECTED INDICATORS BY SCHOOL DISTRICT, population under age 6

School district	Population under age 6	Economically disadvantaged	ODE spaces	ODE enrollment	ODJFS spaces	ODJFS enrollment
Ansonia	208	38.0%	233	95	0	0
Arcanum-Butler	480	33.5%	0	0	0	0
Bradford	238	58.0%	0	0	23	34
Franklin Monroe	270	58.1%	0	0	0	0
Greenville	1,555	57.8%	312	278	214	210
Mississinawa Valley	288	47.6%	44	42	20	31
Tri-Village	303	50.8%	69	54	0	0
Versailles	749	21.4%	0	0	152	140

For assistance interpreting the data in this county profile and detailed information about the sources and caveats, please review the [User Guide](#)

Sources

1. U.S. Census Bureau, Decennial, Census, 2010
2. Ohio Department of Health, Help Me Grow Early Intervention Child Count, July 2012
3. Ohio Department of Education, December, 2011 Child Counts
4. Ohio Department of Education, Spring Fiscal Year, 2012
5. Ohio Department of Jobs and Family Services, November, 2012
6. Ohio Department of Education, Active sites as of January 2013
7. Ohio Department of Education, Preschool Capacity and Enrollment, November 2012
8. Head Start, School Year, 2012-2013
9. U.S. Census Bureau, American Community Survey, 2007-2011, 5-year estimate
10. Ohio Department of Education, School Year 2011-2012
11. Ohio Department of Education, Interactive Local Report Card, School Year 2010-2011
12. U.S. Census Bureau, Intercensal Population Estimates, 2000-2010