

EARLY CHILDHOOD ADVISORY COUNCIL EARLY LEARNING AND DEVELOPMENT COUNTY PROFILE

Guernsey County

Children with Special Needs - ODH and ODE

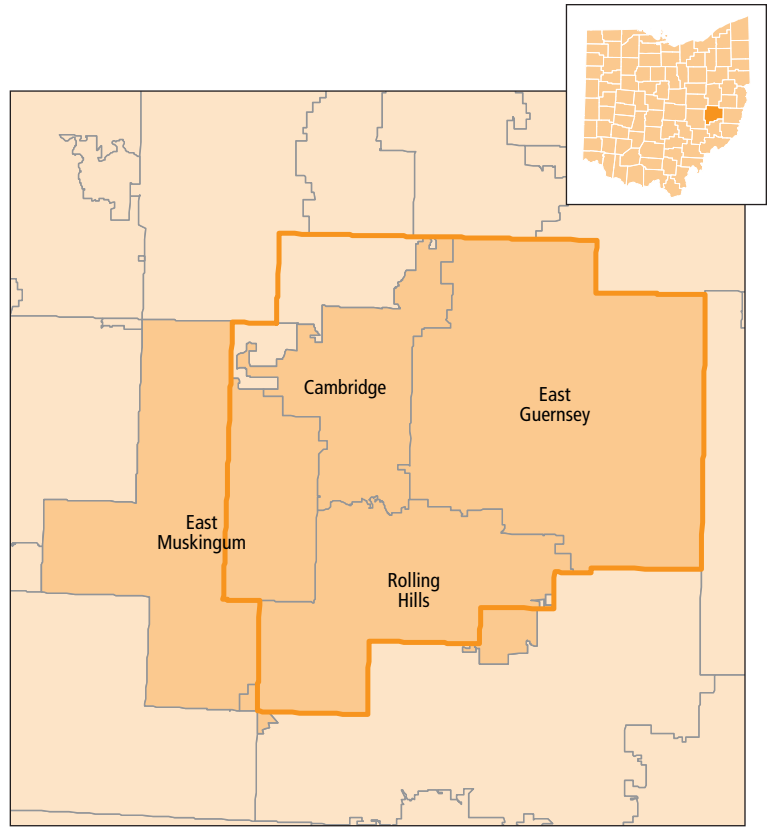
TOTAL POPULATION UNDER AGE 6¹	2,944	100.0%
Children with an active IFSP (under age 3) ²	77	2.6%
Preschool Special Education (PSE) enrollment (ages 3-5) ³	178	6.0%

Children Facing Economic Hardship - ODE and ODJFS

TOTAL CHILDREN COUNTED (UNDER AGE 6)^{4,5}	164	100.0%
Household income 100% to 199% FPL (low-income) ^{4,5}	52	31.7%
Household income below 100% FPL (in poverty) ^{4,5}	98	59.8%

Children with Limited English Proficiency - ODE and ODJFS

TOTAL CHILDREN COUNTED (UNDER AGE 6)^{4,5}	889	100.0%
English proficient ^{4,5}	889	100.0%
Limited English proficiency ^{4,5}	0	0.0%



Number of children for every:

Early learning and development program space

Accredited, quality-rated, Early Childhood Education (ECE), or Preschool Special Education (PSE) program space

Guernsey County

State of Ohio

3.5

2.8

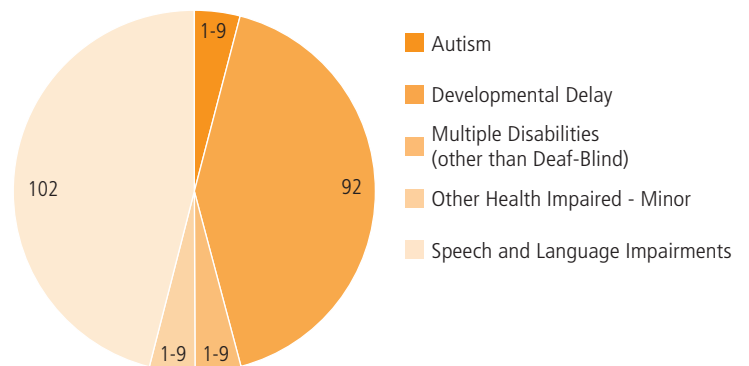
5.3

7.2



Of every 20 children in Guernsey County, **11** are economically disadvantaged, including **7** living in poverty

Types of disabilities for children enrolled in Preschool Special Education (ages 3-5)¹⁰



SUPPLY

ODE - Licensed Sites

LICENSED PRESCHOOL SITES⁶ **8** **100.0%**

ODJFS - Certified/Licensed Providers

TOTAL CERTIFIED/LICENSED PROVIDERS⁵ **36** **100.0%**

Child care centers ⁵	10	27.8%
With infant spaces ⁵	3	30.0%
With toddler spaces ⁵	6	60.0%
With preschool spaces ⁵	10	100.0%
Type A home providers ⁵	1	2.8%
Type B home providers ⁵	18	50.0%
Limited providers ⁵	7	19.4%

ACCREDITATION AND QUALITY-RATING

CHILD CARE CENTERS SERVING UNDER AGE 6⁵ **10** **100.0%**

Not accredited or quality-rated ⁵	5	50.0%
Accredited or quality-rated ⁵	5	50.0%
3-star programs, Step Up to Quality ⁵	0	0.0%
2-star programs ⁵	3	30.0%
1-star programs ⁵	2	20.0%
Accredited programs ⁵	0	0.0%

ODE - Licensed Spaces

UNDER AGE 6 LICENSED SPACES⁷ **296** **100.0%**

ODE - Funded Spaces

EARLY CHILDHOOD EDUCATION (ECE) FUNDED SPACES³ **30** **100.0%**

ODJFS - Certified/Licensed Child Care Spaces

TOTAL CHILD CARE SPACES⁵ **683** **100.0%**

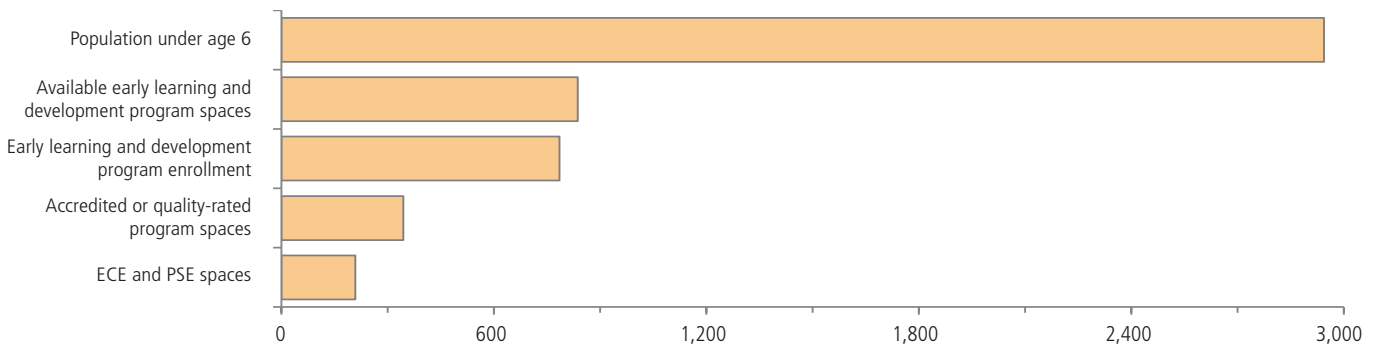
Child care centers ⁵	540	79.1%
Infant ⁵	33	6.1%
Toddler ⁵	84	15.6%
Preschool ⁵	423	78.3%
Type A home providers ⁵	12	1.8%
Type B home providers ⁵	108	15.8%
Limited providers ⁵	23	3.4%

ACCREDITATION AND QUALITY-RATING

UNDER AGE 6 CHILD CARE CENTER SPACES⁵ **540** **100.0%**

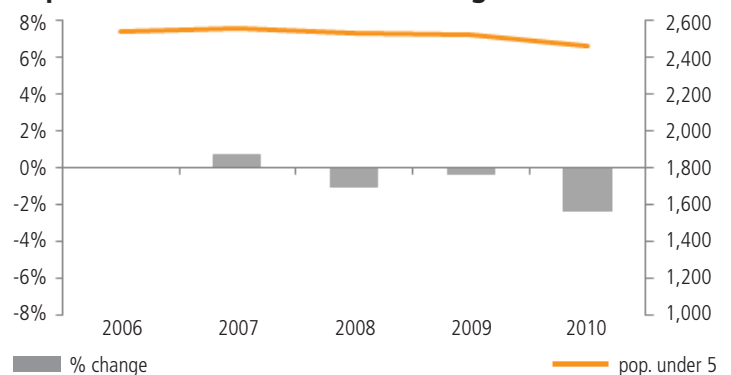
Not accredited or quality-rated ⁵	196	36.3%
Accredited or quality-rated programs ⁵	344	63.7%
3-star programs, Step Up to Quality ⁵	0	0.0%
2-star programs ⁵	266	49.3%
1-star programs ⁵	78	14.4%
Accredited programs ⁵	0	0.0%

Supply and demand for early learning and development program spaces serving children under age 6



Of the **836** early learning and development spaces, **552** or **66.0%** are in accredited, quality-rated, ECE, or PSE programs

Population trend, children under age 5¹²



DEMAND

ODE - Licensed Site Enrollment

UNDER AGE 6 ENROLLMENT⁷	187	100.0%
---	------------	---------------

ODJFS - Licensed Center Enrollment

UNDER AGE 6 ENROLLMENT⁵	598	100.0%
---	------------	---------------

Head Start Enrollment

TOTAL HEAD START ENROLLMENT⁸	286	100.0%
Early Head Start (EHS) enrollment (under age 3) ⁸	34	11.9%
Head Start enrollment (ages 3 to 5) ⁸	252	88.1%

Children by Age

POPULATION UNDER AGE 6¹	2,944	100.0%
Population under age 3 ¹	1,440	48.9%
Population ages 3 to 5 ¹	1,504	51.1%
Change, 2000–2010 ¹	-394	-11.8%

Children by Race and Ethnicity

POPULATION UNDER AGE 6¹	2,944	100.0%
White (non-Hispanic) ¹	2,689	91.3%
Black or African American ¹	56	1.9%
Asian ¹	13	0.4%
Other race ¹	17	0.6%
Multiracial ¹	136	4.6%
Hispanic or Latino (of any race) ¹	55	1.9%

Living Arrangements by Householder

POPULATION UNDER AGE 6¹	2,944	100.0%
Parent (including step-parents and adoptive parents) ¹	2,536	86.1%
<i>Married parents (both present)¹</i>	1,594	54.1%
<i>Single parent¹</i>	942	32.0%
Other relative (including grandparent) ¹	350	11.9%
Non-relative (foster parent, group quarters, other) ¹	58	2.0%

Parental Employment

UNDER AGE 6 WITH PARENT HOUSEHOLDER⁹	2,998	100.0%
Both parents or only parent in labor force ⁹	1,963	65.5%
One parent in labor force, one not ⁹	546	18.2%
Neither parent in labor force ⁹	489	16.3%

Place of Birth and Nativity

UNDER AGE 6 WITH PARENT HOUSEHOLDER⁹	2,998	100.0%
Native-born with native-born parents ⁹	2,977	99.3%
Native-born with 1 or more foreign-born parents ⁹	6	0.2%
Foreign-born with native-born parents ⁹	15	0.5%
Foreign-born with 1 or more foreign-born parents ⁹	0	0.0%

Children with Special Needs

UNDER AGE 3 WITH ACTIVE IFSP	77	100.0%
Diagnosed physical or mental condition ²	40	51.9%
Developmental delay ²	37	48.1%
POPULATION AGES 3 TO 5¹	1,504	100.0%
Preschool Special Education (PSE) enrollment ³	178	11.8%
<i>Autism¹⁰</i>	1-9	-
<i>Cognitive disabilities¹⁰</i>	0	-
<i>Deafness (hearing impairments)¹⁰</i>	0	-
<i>Developmental delay¹⁰</i>	92	-
<i>Emotional disturbance (SBH)¹⁰</i>	0	-
<i>Multiple disabilities (other than deaf-blind)¹⁰</i>	1-9	-
<i>Orthopedic impairments¹⁰</i>	0	-
<i>Other health impaired - minor¹⁰</i>	1-9	-
<i>Specific learning disabilities¹⁰</i>	1-9	-
<i>Speech and language impairments¹⁰</i>	102	-

Children Facing Economic Hardship

POPULATION UNDER AGE 6⁹	3,103	100.0%
Not economically disadvantaged ⁹	1,408	45.4%
Household income 100% to 199% FPL (low-income) ⁹	605	19.5%
Household income below 100% FPL (in poverty) ⁹	1,090	35.1%

ODE - TOTAL CHILDREN COUNTED (AGES 3-5)⁴	44	100.0%
Not economically disadvantaged ⁴	14	31.8%
Household income 100% to 199% FPL (low-income) ⁴	11	25.0%
Household income below 100% FPL (in poverty) ⁴	19	43.2%

ODJFS - TOTAL CHILDREN COUNTED (UNDER AGE 6)⁵	120	100.0%
Not economically disadvantaged ⁵	0	0.0%
Household income 100% to 199% FPL (low-income) ⁵	41	34.2%
Household income below 100% FPL (in poverty) ⁵	79	65.8%

Children with Limited English Proficiency

ODE - TOTAL CHILDREN COUNTED (AGES 3-5)⁴	291	100.0%
English proficient ⁴	291	100.0%
Limited English proficiency ⁴	0	0.0%

ODJFS - TOTAL CHILDREN COUNTED (UNDER AGE 6)⁵	598	100.0%
English primary language ⁵	598	100.0%
Non-English primary language eligible ⁵	0	0.0%
<i>Non-English primary language utilization⁵</i>	0	0.0%

Kindergarten Readiness

STUDENTS TESTED FOR KRA-L¹¹	385	100.0%
Students scoring in KRA-L Band 1 ¹¹ (requiring intensive intervention and instruction)	77	20.0%

SELECTED INDICATORS BY SCHOOL DISTRICT, population under age 6

School district	Population under age 6	Economically disadvantaged	ODE spaces	ODE enrollment	ODJFS spaces	ODJFS enrollment
Cambridge	1,356	64.5%	84	73	303	352
East Guernsey	760	47.2%	110	51	40	38
East Muskingum	718	31.6%	58	48	77	61
Rolling Hills	750	53.6%	84	47	197	208

For assistance interpreting the data in this county profile and detailed information about the sources and caveats, please review the [User Guide](#)

Sources

1. U.S. Census Bureau, Decennial, Census, 2010
2. Ohio Department of Health, Help Me Grow Early Intervention Child Count, July 2012
3. Ohio Department of Education, December, 2011 Child Counts
4. Ohio Department of Education, Spring Fiscal Year, 2012
5. Ohio Department of Jobs and Family Services, November, 2012
6. Ohio Department of Education, Active sites as of January 2013
7. Ohio Department of Education, Preschool Capacity and Enrollment, November 2012
8. Head Start, School Year, 2012-2013
9. U.S. Census Bureau, American Community Survey, 2007-2011, 5-year estimate
10. Ohio Department of Education, School Year 2011-2012
11. Ohio Department of Education, Interactive Local Report Card, School Year 2010-2011
12. U.S. Census Bureau, Intercensal Population Estimates, 2000-2010