

# EARLY CHILDHOOD ADVISORY COUNCIL EARLY LEARNING AND DEVELOPMENT COUNTY PROFILE

## Huron County

### Children with Special Needs - ODH and ODE

<b>TOTAL POPULATION UNDER AGE 6<sup>1</sup></b>	<b>4,865</b>	<b>100.0%</b>
Children with an active IFSP (under age 3) <sup>2</sup>	126	2.6%
Preschool Special Education (PSE) enrollment (ages 3-5) <sup>3</sup>	153	3.1%

### Children Facing Economic Hardship - ODE and ODJFS

<b>TOTAL CHILDREN COUNTED (UNDER AGE 6)<sup>4,5</sup></b>	<b>443</b>	<b>100.0%</b>
Household income 100% to 199% FPL (low-income) <sup>4,5</sup>	89	20.1%
Household income below 100% FPL (in poverty) <sup>4,5</sup>	298	67.3%

### Children with Limited English Proficiency - ODE and ODJFS

<b>TOTAL CHILDREN COUNTED (UNDER AGE 6)<sup>4,5</sup></b>	<b>1,284</b>	<b>100.0%</b>
English proficient <sup>4,5</sup>	1,273	99.1%
Limited English proficiency <sup>4,5</sup>	11	0.9%



### Number of children for every:

Early learning and development program space

Accredited, quality-rated, Early Childhood Education (ECE), or Preschool Special Education (PSE) program space

### Huron County

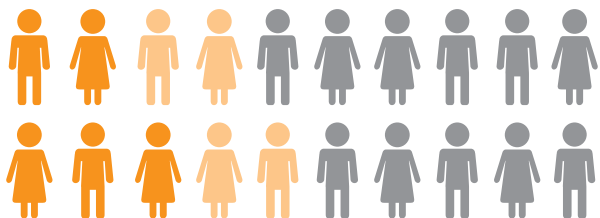
### State of Ohio

4.8

2.8

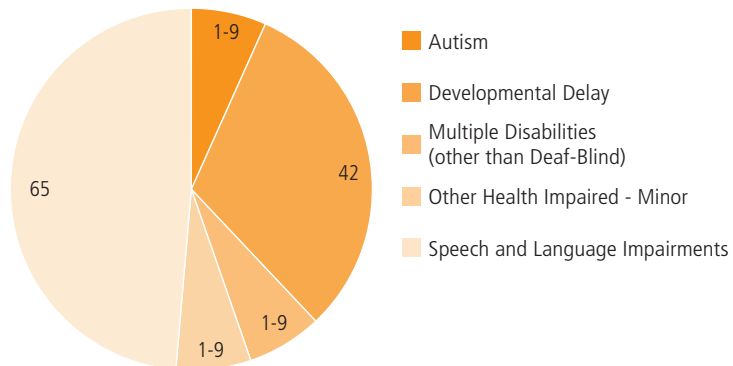
10.3

7.2



Of every 20 children in Huron County,  
**9** are economically disadvantaged,  
including **5** living in poverty

### Types of disabilities for children enrolled in Preschool Special Education (ages 3-5)<sup>10</sup>



## SUPPLY

### ODE - Licensed Sites

LICENSED PRESCHOOL SITES<sup>6</sup> **11** **100.0%**

### ODJFS - Certified/Licensed Providers

TOTAL CERTIFIED/LICENSED PROVIDERS<sup>5</sup> **71** **100.0%**

Child care centers <sup>5</sup>	15	21.1%
With infant spaces <sup>5</sup>	5	33.3%
With toddler spaces <sup>5</sup>	7	46.7%
With preschool spaces <sup>5</sup>	15	100.0%
Type A home providers <sup>5</sup>	0	0.0%
Type B home providers <sup>5</sup>	43	60.6%
Limited providers <sup>5</sup>	13	18.3%

### ACCREDITATION AND QUALITY-RATING

CHILD CARE CENTERS SERVING UNDER AGE 6<sup>5</sup> **15** **100.0%**

Not accredited or quality-rated <sup>5</sup>	8	53.3%
Accredited or quality-rated <sup>5</sup>	7	46.7%
3-star programs, Step Up to Quality <sup>5</sup>	0	0.0%
2-star programs <sup>5</sup>	1	6.7%
1-star programs <sup>5</sup>	6	40.0%
Accredited programs <sup>5</sup>	0	0.0%

### ODE - Licensed Spaces

UNDER AGE 6 LICENSED SPACES<sup>7</sup> **447** **100.0%**

### ODE - Funded Spaces

EARLY CHILDHOOD EDUCATION (ECE) FUNDED SPACES<sup>3</sup> **14** **100.0%**

### ODJFS - Certified/Licensed Child Care Spaces

TOTAL CHILD CARE SPACES<sup>5</sup> **858** **100.0%**

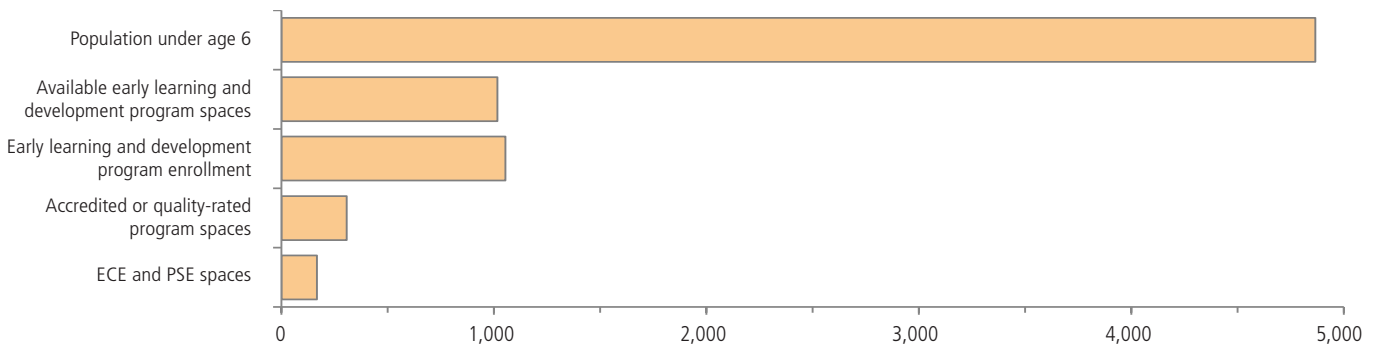
Child care centers <sup>5</sup>	569	66.3%
Infant <sup>5</sup>	32	5.6%
Toddler <sup>5</sup>	90	15.8%
Preschool <sup>5</sup>	447	78.6%
Type A home providers <sup>5</sup>	0	0.0%
Type B home providers <sup>5</sup>	258	30.1%
Limited providers <sup>5</sup>	31	3.6%

### ACCREDITATION AND QUALITY-RATING

UNDER AGE 6 CHILD CARE CENTER SPACES<sup>5</sup> **569** **100.0%**

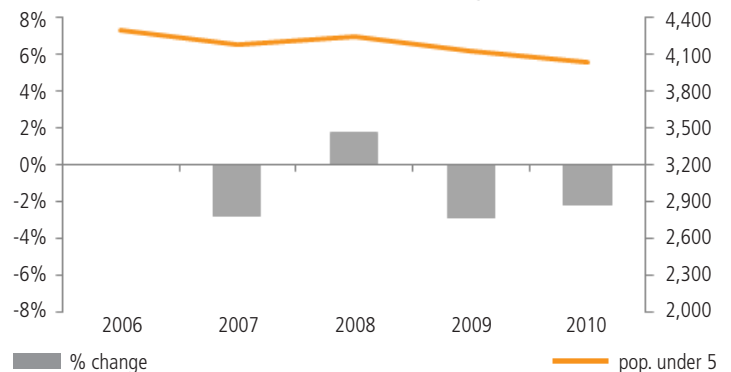
Not accredited or quality-rated <sup>5</sup>	262	46.0%
Accredited or quality-rated programs <sup>5</sup>	307	54.0%
3-star programs, Step Up to Quality <sup>5</sup>	0	0.0%
2-star programs <sup>5</sup>	52	9.1%
1-star programs <sup>5</sup>	255	44.8%
Accredited programs <sup>5</sup>	0	0.0%

## Supply and demand for early learning and development program spaces serving children under age 6



Of the **1,016** early learning and development spaces, **474** or **46.7%** are in accredited, quality-rated, ECE, or PSE programs

## Population trend, children under age 5<sup>12</sup>



## DEMAND

## ODE - Licensed Site Enrollment

UNDER AGE 6 ENROLLMENT <sup>7</sup>	375	100.0%
-------------------------------------	-----	--------

## ODJFS - Licensed Center Enrollment

UNDER AGE 6 ENROLLMENT <sup>5</sup>	679	100.0%
-------------------------------------	-----	--------

## Head Start Enrollment

TOTAL HEAD START ENROLLMENT <sup>8</sup>	180	100.0%
Early Head Start (EHS) enrollment (under age 3) <sup>8</sup>	0	0.0%
Head Start enrollment (ages 3 to 5) <sup>8</sup>	180	100.0%

## Children by Age

POPULATION UNDER AGE 6 <sup>1</sup>	4,865	100.0%
Population under age 3 <sup>1</sup>	2,422	49.8%
Population ages 3 to 5 <sup>1</sup>	2,443	50.2%
Change, 2000–2010 <sup>1</sup>	-523	-9.7%

## Children by Race and Ethnicity

POPULATION UNDER AGE 6 <sup>1</sup>	4,865	100.0%
White (non-Hispanic) <sup>1</sup>	4,076	83.8%
Black or African American <sup>1</sup>	56	1.2%
Asian <sup>1</sup>	18	0.4%
Other race <sup>1</sup>	203	4.2%
Multiracial <sup>1</sup>	201	4.1%
Hispanic or Latino (of any race) <sup>1</sup>	566	11.6%

## Living Arrangements by Householder

POPULATION UNDER AGE 6 <sup>1</sup>	4,865	100.0%
Parent (including step-parents and adoptive parents) <sup>1</sup>	4,117	84.6%
Married parents (both present) <sup>1</sup>	2,682	55.1%
Single parent <sup>1</sup>	1,435	29.5%
Other relative (including grandparent) <sup>1</sup>	612	12.6%
Non-relative (foster parent, group quarters, other) <sup>1</sup>	136	2.8%

## Parental Employment

UNDER AGE 6 WITH PARENT HOUSEHOLDER <sup>9</sup>	4,612	100.0%
Both parents or only parent in labor force <sup>9</sup>	3,285	71.2%
One parent in labor force, one not <sup>9</sup>	687	14.9%
Neither parent in labor force <sup>9</sup>	640	13.9%

## Place of Birth and Nativity

UNDER AGE 6 WITH PARENT HOUSEHOLDER <sup>9</sup>	4,612	100.0%
Native-born with native-born parents <sup>9</sup>	4,172	90.5%
Native-born with 1 or more foreign-born parents <sup>9</sup>	427	9.3%
Foreign-born with native-born parents <sup>9</sup>	6	0.1%
Foreign-born with 1 or more foreign-born parents <sup>9</sup>	7	0.2%

## Children with Special Needs

UNDER AGE 3 WITH ACTIVE IFSP	126	100.0%
Diagnosed physical or mental condition <sup>2</sup>	82	65.1%
Developmental delay <sup>2</sup>	44	34.9%
POPULATION AGES 3 TO 5 <sup>1</sup>	2,443	100.0%
Preschool Special Education (PSE) enrollment <sup>3</sup>	153	6.3%
Autism <sup>10</sup>	1-9	-
Cognitive disabilities <sup>10</sup>	1-9	-
Deafness (hearing impairments) <sup>10</sup>	1-9	-
Developmental delay <sup>10</sup>	42	-
Emotional disturbance (SBH) <sup>10</sup>	1-9	-
Multiple disabilities (other than deaf-blind) <sup>10</sup>	1-9	-
Orthopedic impairments <sup>10</sup>	0	-
Other health impaired - minor <sup>10</sup>	1-9	-
Specific learning disabilities <sup>10</sup>	1-9	-
Speech and language impairments <sup>10</sup>	65	-

## Children Facing Economic Hardship

POPULATION UNDER AGE 6 <sup>9</sup>	4,827	100.0%
Not economically disadvantaged <sup>9</sup>	2,610	54.1%
Household income 100% to 199% FPL (low-income) <sup>9</sup>	958	19.8%
Household income below 100% FPL (in poverty) <sup>9</sup>	1,259	26.1%

ODE - TOTAL CHILDREN COUNTED (AGES 3-5) <sup>4</sup>	366	100.0%
Not economically disadvantaged <sup>4</sup>	56	15.3%
Household income 100% to 199% FPL (low-income) <sup>4</sup>	72	19.7%
Household income below 100% FPL (in poverty) <sup>4</sup>	238	65.0%

ODJFS - TOTAL CHILDREN COUNTED (UNDER AGE 6) <sup>5</sup>	77	100.0%
Not economically disadvantaged <sup>5</sup>	0	0.0%
Household income 100% to 199% FPL (low-income) <sup>5</sup>	17	22.1%
Household income below 100% FPL (in poverty) <sup>5</sup>	60	77.9%

## Children with Limited English Proficiency

ODE - TOTAL CHILDREN COUNTED (AGES 3-5) <sup>4</sup>	605	100.0%
English proficient <sup>4</sup>	605	100.0%
Limited English proficiency <sup>4</sup>	0	0.0%

ODJFS - TOTAL CHILDREN COUNTED (UNDER AGE 6) <sup>5</sup>	679	100.0%
English primary language <sup>5</sup>	668	98.4%
Non-English primary language eligible <sup>5</sup>	11	1.6%
Non-English primary language utilization <sup>5</sup>	9	1.3%

## Kindergarten Readiness

STUDENTS TESTED FOR KRA-L <sup>11</sup>	764	100.0%
Students scoring in KRA-L Band 1 <sup>11</sup> (requiring intensive intervention and instruction)	189	24.7%

## SELECTED INDICATORS BY SCHOOL DISTRICT, population under age 6

School district	Population under age 6	Economically disadvantaged	ODE spaces	ODE enrollment	ODJFS spaces	ODJFS enrollment
Bellevue	1,056	58.8%	61	0	227	248
Edison	687	29.0%	213	127	15	12
Monroeville	448	34.6%	84	57	0	0
New London	475	26.3%	39	0	47	47
Norwalk	1,379	52.7%	133	162	298	435
South Central	456	33.3%	29	34	0	0
Western Reserve	496	35.9%	44	38	39	49
Willard	1,109	58.8%	38	60	170	136

For assistance interpreting the data in this county profile and detailed information about the sources and caveats, please review the [User Guide](#)

## Sources

1. U.S. Census Bureau, Decennial, Census, 2010
2. Ohio Department of Health, Help Me Grow Early Intervention Child Count, July 2012
3. Ohio Department of Education, December, 2011 Child Counts
4. Ohio Department of Education, Spring Fiscal Year, 2012
5. Ohio Department of Jobs and Family Services, November, 2012
6. Ohio Department of Education, Active sites as of January 2013
7. Ohio Department of Education, Preschool Capacity and Enrollment, November 2012
8. Head Start, School Year, 2012-2013
9. U.S. Census Bureau, American Community Survey, 2007-2011, 5-year estimate
10. Ohio Department of Education, School Year 2011-2012
11. Ohio Department of Education, Interactive Local Report Card, School Year 2010-2011
12. U.S. Census Bureau, Intercensal Population Estimates, 2000-2010