

EARLY CHILDHOOD ADVISORY COUNCIL EARLY LEARNING AND DEVELOPMENT COUNTY PROFILE

Scioto County

Children with Special Needs - ODH and ODE

TOTAL POPULATION UNDER AGE 6¹	5,825	100.0%
Children with an active IFSP (under age 3) ²	64	1.1%
Preschool Special Education (PSE) enrollment (ages 3-5) ³	152	2.6%

Children Facing Economic Hardship - ODE and ODJFS

TOTAL CHILDREN COUNTED (UNDER AGE 6)^{4,5}	812	100.0%
Household income 100% to 199% FPL (low-income) ^{4,5}	166	20.4%
Household income below 100% FPL (in poverty) ^{4,5}	538	66.3%

Children with Limited English Proficiency - ODE and ODJFS

TOTAL CHILDREN COUNTED (UNDER AGE 6)^{4,5}	1,348	100.0%
English proficient ^{4,5}	1,348	100.0%
Limited English proficiency ^{4,5}	0	0.0%



Number of children for every:

Early learning and development program space

Accredited, quality-rated, Early Childhood Education (ECE), or Preschool Special Education (PSE) program space

Scioto County

State of Ohio

3.5

2.8

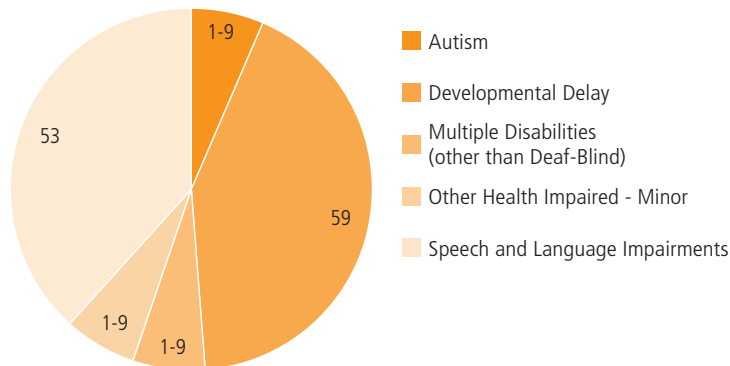
7.9

7.2



Of every 20 children in Scioto County,
12 are economically disadvantaged,
including **6** living in poverty

Types of disabilities for children enrolled in Preschool Special Education (ages 3-5)



SUPPLY

ODE - Licensed Sites

LICENSED PRESCHOOL SITES⁶ **14** **100.0%**

ODJFS - Certified/Licensed Providers

TOTAL CERTIFIED/LICENSED PROVIDERS⁵ **71** **100.0%**

Child care centers ⁵	17	23.9%
With infant spaces ⁵	10	58.8%
With toddler spaces ⁵	11	64.7%
With preschool spaces ⁵	17	100.0%
Type A home providers ⁵	7	9.9%
Type B home providers ⁵	43	60.6%
Limited providers ⁵	4	5.6%

ACCREDITATION AND QUALITY-RATING

CHILD CARE CENTERS SERVING UNDER AGE 6⁵ **17** **100.0%**

Not accredited or quality-rated ⁵	15	88.2%
Accredited or quality-rated ⁵	2	11.8%
3-star programs, Step Up to Quality ⁵	1	5.9%
2-star programs ⁵	0	0.0%
1-star programs ⁵	1	5.9%
Accredited programs ⁵	0	0.0%

ODE - Licensed Spaces

UNDER AGE 6 LICENSED SPACES⁷ **670** **100.0%**

ODE - Funded Spaces

EARLY CHILDHOOD EDUCATION (ECE) FUNDED SPACES³ **327** **100.0%**

ODJFS - Certified/Licensed Child Care Spaces

TOTAL CHILD CARE SPACES⁵ **1,318** **100.0%**

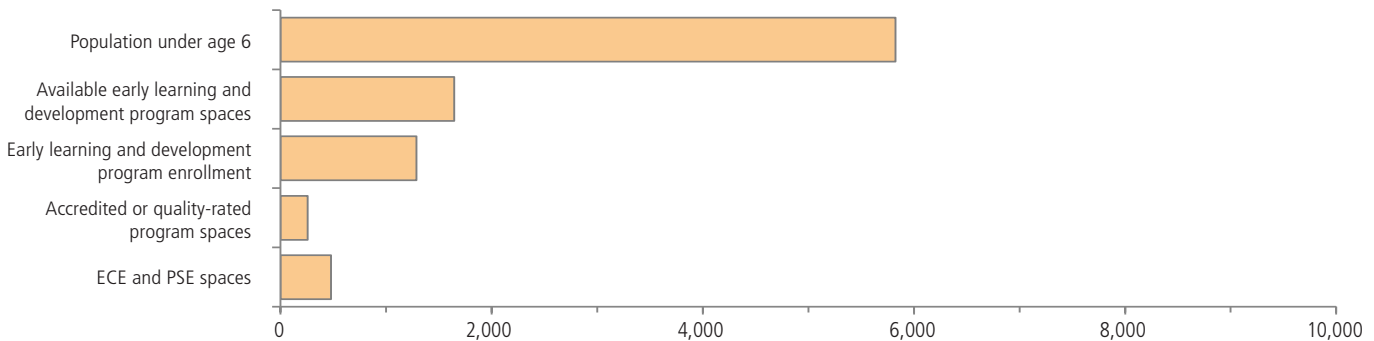
Child care centers ⁵	975	74.0%
Infant ⁵	108	11.1%
Toddler ⁵	183	18.8%
Preschool ⁵	684	70.2%
Type A home providers ⁵	69	5.2%
Type B home providers ⁵	258	19.6%
Limited providers ⁵	16	1.2%

ACCREDITATION AND QUALITY-RATING

UNDER AGE 6 CHILD CARE CENTER SPACES⁵ **975** **100.0%**

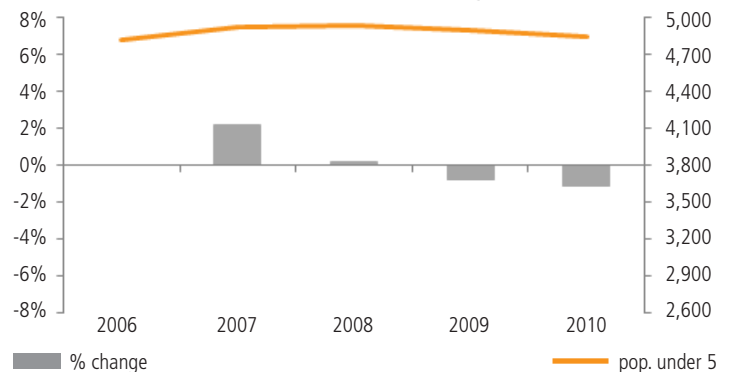
Not accredited or quality-rated ⁵	720	73.8%
Accredited or quality-rated programs ⁵	255	26.2%
3-star programs, Step Up to Quality ⁵	179	18.4%
2-star programs ⁵	0	0.0%
1-star programs ⁵	76	7.8%
Accredited programs ⁵	0	0.0%

Supply and demand for early learning and development program spaces serving children under age 6



Of the **1,645** early learning and development spaces, **734** or **44.6%** are in accredited, quality-rated, ECE, or PSE programs

Population trend, children under age 5¹²



DEMAND

ODE - Licensed Site Enrollment

UNDER AGE 6 ENROLLMENT⁷	578	100.0%
---	------------	---------------

ODJFS - Licensed Center Enrollment

UNDER AGE 6 ENROLLMENT⁵	708	100.0%
---	------------	---------------

Head Start Enrollment

TOTAL HEAD START ENROLLMENT⁸	500	100.0%
--	------------	---------------

Early Head Start (EHS) enrollment (under age 3) ⁸	114	22.8%
--	-----	-------

Head Start enrollment (ages 3 to 5) ⁸	386	77.2%
--	-----	-------

Children by Age

POPULATION UNDER AGE 6¹	5,825	100.0%
---	--------------	---------------

Population under age 3 ¹	2,863	49.2%
-------------------------------------	-------	-------

Population ages 3 to 5 ¹	2,962	50.8%
-------------------------------------	-------	-------

Change, 2000–2010 ¹	-127	-2.1%
--------------------------------	------	-------

Children by Race and Ethnicity

POPULATION UNDER AGE 6¹	5,825	100.0%
---	--------------	---------------

White (non-Hispanic) ¹	5,235	89.9%
-----------------------------------	-------	-------

Black or African American ¹	90	1.5%
--	----	------

Asian ¹	16	0.3%
--------------------	----	------

Other race ¹	85	1.5%
-------------------------	----	------

Multiracial ¹	292	5.0%
--------------------------	-----	------

Hispanic or Latino (of any race) ¹	187	3.2%
---	-----	------

Living Arrangements by Householder

POPULATION UNDER AGE 6¹	5,825	100.0%
---	--------------	---------------

Parent (including step-parents and adoptive parents) ¹	4,571	78.5%
---	-------	-------

<i>Married parents (both present)¹</i>	2,885	49.5%
---	-------	-------

<i>Single parent¹</i>	1,686	28.9%
----------------------------------	-------	-------

Other relative (including grandparent) ¹	1,121	19.2%
---	-------	-------

Non-relative (foster parent, group quarters, other) ¹	133	2.3%
--	-----	------

Parental Employment

UNDER AGE 6 WITH PARENT HOUSEHOLDER⁹	5,400	100.0%
--	--------------	---------------

Both parents or only parent in labor force ⁹	3,177	58.8%
---	-------	-------

One parent in labor force, one not ⁹	1,453	26.9%
---	-------	-------

Neither parent in labor force ⁹	770	14.3%
--	-----	-------

Place of Birth and Nativity

UNDER AGE 6 WITH PARENT HOUSEHOLDER⁹	5,400	100.0%
--	--------------	---------------

Native-born with native-born parents ⁹	5,383	99.7%
---	-------	-------

Native-born with 1 or more foreign-born parents ⁹	17	0.3%
--	----	------

Foreign-born with native-born parents ⁹	0	0.0%
--	---	------

Foreign-born with 1 or more foreign-born parents ⁹	0	0.0%
---	---	------

Children with Special Needs

UNDER AGE 3 WITH ACTIVE IFSP	64	100.0%
-------------------------------------	-----------	---------------

Diagnosed physical or mental condition ²	48	75.0%
---	----	-------

Developmental delay ²	16	25.0%
----------------------------------	----	-------

POPULATION AGES 3 TO 5¹	2,962	100.0%
---	--------------	---------------

Preschool Special Education (PSE) enrollment ³	152	5.1%
---	-----	------

<i>Autism¹⁰</i>	1-9	-
----------------------------	-----	---

<i>Cognitive disabilities¹⁰</i>	1-9	-
--	-----	---

<i>Deafness (hearing impairments)¹⁰</i>	1-9	-
--	-----	---

<i>Developmental delay¹⁰</i>	59	-
---	----	---

<i>Emotional disturbance (SBH)¹⁰</i>	1-9	-
---	-----	---

<i>Multiple disabilities (other than deaf-blind)¹⁰</i>	1-9	-
---	-----	---

<i>Orthopedic impairments¹⁰</i>	1-9	-
--	-----	---

<i>Other health impaired - minor¹⁰</i>	1-9	-
---	-----	---

<i>Specific learning disabilities¹⁰</i>	0	-
--	---	---

<i>Speech and language impairments¹⁰</i>	53	-
---	----	---

Children Facing Economic Hardship

POPULATION UNDER AGE 6⁹	5,771	100.0%
---	--------------	---------------

Not economically disadvantaged ⁹	2,354	40.8%
---	-------	-------

Household income 100% to 199% FPL (low-income) ⁹	1,555	26.9%
---	-------	-------

Household income below 100% FPL (in poverty) ⁹	1,862	32.3%
---	-------	-------

ODE - TOTAL CHILDREN COUNTED (AGES 3-5)⁴	580	100.0%
--	------------	---------------

Not economically disadvantaged ⁴	108	18.6%
---	-----	-------

Household income 100% to 199% FPL (low-income) ⁴	107	18.4%
---	-----	-------

Household income below 100% FPL (in poverty) ⁴	365	62.9%
---	-----	-------

ODJFS - TOTAL CHILDREN COUNTED (UNDER AGE 6)⁵	232	100.0%
---	------------	---------------

Not economically disadvantaged ⁵	0	0.0%
---	---	------

Household income 100% to 199% FPL (low-income) ⁵	59	25.4%
---	----	-------

Household income below 100% FPL (in poverty) ⁵	173	74.6%
---	-----	-------

Children with Limited English Proficiency

ODE - TOTAL CHILDREN COUNTED (AGES 3-5)⁴	640	100.0%
--	------------	---------------

English proficient ⁴	640	100.0%
---------------------------------	-----	--------

Limited English proficiency ⁴	0	0.0%
--	---	------

ODJFS - TOTAL CHILDREN COUNTED (UNDER AGE 6)⁵	708	100.0%
---	------------	---------------

English primary language ⁵	708	100.0%
---------------------------------------	-----	--------

Non-English primary language eligible ⁵	0	0.0%
--	---	------

<i>Non-English primary language utilization⁵</i>	0	0.0%
---	---	------

Kindergarten Readiness

STUDENTS TESTED FOR KRA-L¹¹	925	100.0%
---	------------	---------------

Students scoring in KRA-L Band 1 ¹¹ (requiring intensive intervention and instruction)	227	24.6%
--	-----	-------

SELECTED INDICATORS BY SCHOOL DISTRICT, population under age 6

School district	Population under age 6	Economically disadvantaged	ODE spaces	ODE enrollment	ODJFS spaces	ODJFS enrollment
Bloom-Vernon	577	53.2%	36	39	0	0
Clay	263	47.9%	62	45	0	0
Green	298	62.8%	48	42	0	0
Minford	594	48.0%	46	61	95	105
New Boston	195	83.1%	45	40	90	78
Northwest	1,025	58.6%	46	41	94	64
Portsmouth	1,393	74.8%	230	162	533	317
Valley	432	64.8%	76	53	0	0
Washington-Nile	489	51.3%	51	54	68	86
Wheelerburg	465	37.8%	30	41	95	58

For assistance interpreting the data in this county profile and detailed information about the sources and caveats, please review the [User Guide](#)

Sources

1. U.S. Census Bureau, Decennial, Census, 2010
2. Ohio Department of Health, Help Me Grow Early Intervention Child Count, July 2012
3. Ohio Department of Education, December, 2011 Child Counts
4. Ohio Department of Education, Spring Fiscal Year, 2012
5. Ohio Department of Jobs and Family Services, November, 2012
6. Ohio Department of Education, Active sites as of January 2013
7. Ohio Department of Education, Preschool Capacity and Enrollment, November 2012
8. Head Start, School Year, 2012-2013
9. U.S. Census Bureau, American Community Survey, 2007-2011, 5-year estimate
10. Ohio Department of Education, School Year 2011-2012
11. Ohio Department of Education, Interactive Local Report Card, School Year 2010-2011
12. U.S. Census Bureau, Intercensal Population Estimates, 2000-2010