

EARLY CHILDHOOD ADVISORY COUNCIL EARLY LEARNING AND DEVELOPMENT COUNTY PROFILE

Wyandot County

Children with Special Needs - ODH and ODE

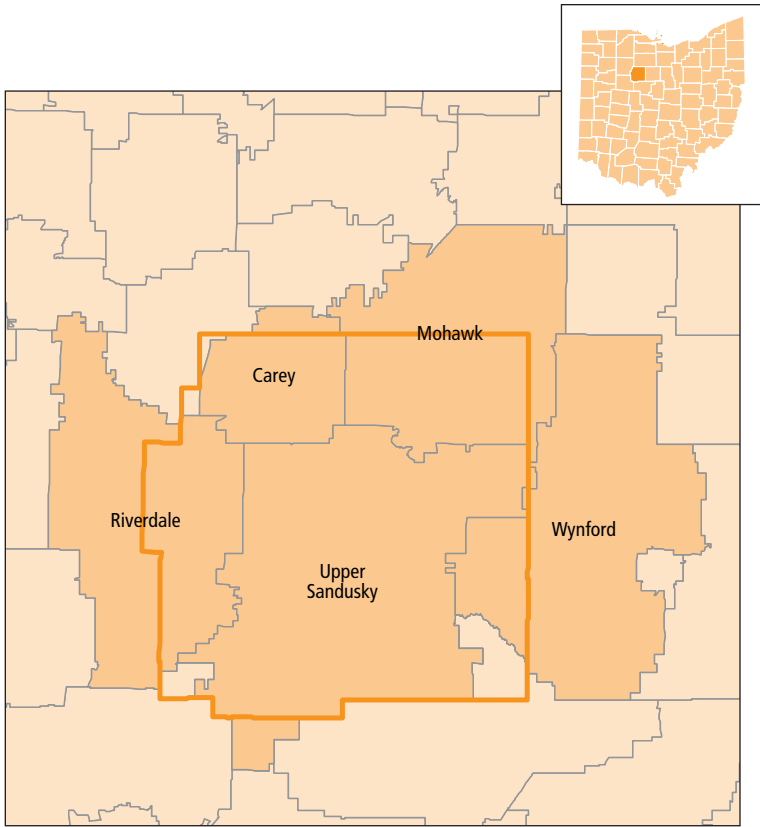
TOTAL POPULATION UNDER AGE 6¹	1,732	100.0%
Children with an active IFSP (under age 3) ²	16	0.9%
Preschool Special Education (PSE) enrollment (ages 3-5) ³	80	4.6%

Children Facing Economic Hardship - ODE and ODJFS

TOTAL CHILDREN COUNTED (UNDER AGE 6)^{4,5}	34	100.0%
Household income 100% to 199% FPL (low-income) ^{4,5}	16	47.1%
Household income below 100% FPL (in poverty) ^{4,5}	8	23.5%

Children with Limited English Proficiency - ODE and ODJFS

TOTAL CHILDREN COUNTED (UNDER AGE 6)^{4,5}	361	100.0%
English proficient ^{4,5}	361	100.0%
Limited English proficiency ^{4,5}	0	0.0%



Number of children for every:

Early learning and development program space

Accredited, quality-rated, Early Childhood Education (ECE), or Preschool Special Education (PSE) program space

Wyandot County

State of Ohio

7.0

2.8

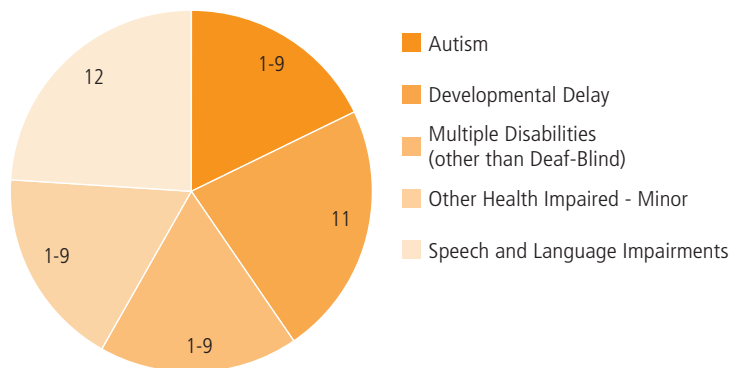
21.7

7.2



Of every 20 children in Wyandot County, **8** are economically disadvantaged, including **1** living in poverty

Types of disabilities for children enrolled in Preschool Special Education (ages 3-5)



SUPPLY

ODE - Licensed Sites

LICENSED PRESCHOOL SITES⁶ 5 100.0%

ODJFS - Certified/Licensed Providers

TOTAL CERTIFIED/LICENSED PROVIDERS⁵ 17 100.0%

Child care centers ⁵	6	35.3%
With infant spaces ⁵	0	0.0%
With toddler spaces ⁵	2	33.3%
With preschool spaces ⁵	6	100.0%
Type A home providers ⁵	0	0.0%
Type B home providers ⁵	10	58.8%
Limited providers ⁵	1	5.9%

ACCREDITATION AND QUALITY-RATING

CHILD CARE CENTERS SERVING UNDER AGE 6⁵ 6 100.0%

Not accredited or quality-rated ⁵	6	100.0%
Accredited or quality-rated ⁵	0	0.0%
3-star programs, Step Up to Quality ⁵	0	0.0%
2-star programs ⁵	0	0.0%
1-star programs ⁵	0	0.0%
Accredited programs ⁵	0	0.0%

ODE - Licensed Spaces

UNDER AGE 6 LICENSED SPACES⁷ 117 100.0%

ODE - Funded Spaces

EARLY CHILDHOOD EDUCATION (ECE) FUNDED SPACES³ 0 100.0%

ODJFS - Certified/Licensed Child Care Spaces

TOTAL CHILD CARE SPACES⁵ 193 100.0%

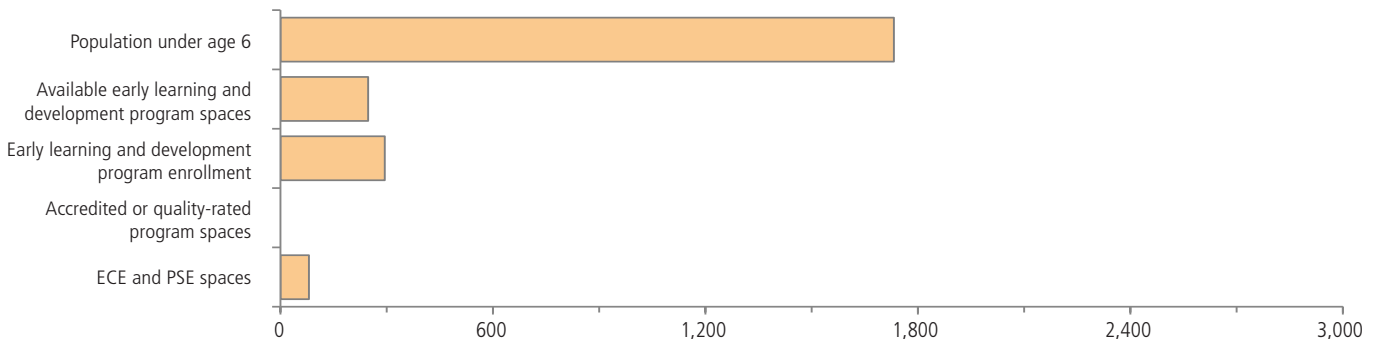
Child care centers ⁵	130	67.4%
Infant ⁵	0	0.0%
Toddler ⁵	3	2.3%
Preschool ⁵	127	97.7%
Type A home providers ⁵	0	0.0%
Type B home providers ⁵	60	31.1%
Limited providers ⁵	3	1.6%

ACCREDITATION AND QUALITY-RATING

UNDER AGE 6 CHILD CARE CENTER SPACES⁵ 130 100.0%

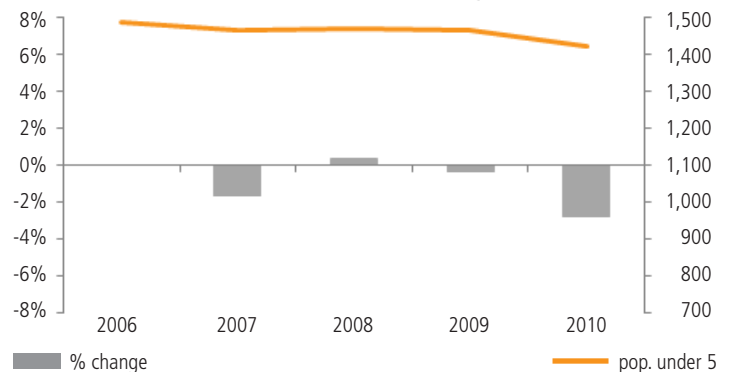
Not accredited or quality-rated ⁵	130	100.0%
Accredited or quality-rated programs ⁵	0	0.0%
3-star programs, Step Up to Quality ⁵	0	0.0%
2-star programs ⁵	0	0.0%
1-star programs ⁵	0	0.0%
Accredited programs ⁵	0	0.0%

Supply and demand for early learning and development program spaces serving children under age 6



Of the **247** early learning and development spaces, **80** or **32.4%** are in accredited, quality-rated, ECE, or PSE programs

Population trend, children under age 5¹²



DEMAND

ODE - Licensed Site Enrollment

UNDER AGE 6 ENROLLMENT ⁷	44	100.0%
-------------------------------------	----	--------

ODJFS - Licensed Center Enrollment

UNDER AGE 6 ENROLLMENT ⁵	250	100.0%
-------------------------------------	-----	--------

Head Start Enrollment

TOTAL HEAD START ENROLLMENT ⁸	59	100.0%
Early Head Start (EHS) enrollment (under age 3) ⁸	0	0.0%
Head Start enrollment (ages 3 to 5) ⁸	59	100.0%

Children by Age

POPULATION UNDER AGE 6 ¹	1,732	100.0%
Population under age 3 ¹	845	48.8%
Population ages 3 to 5 ¹	887	51.2%
Change, 2000–2010 ¹	-54	-3.0%

Children by Race and Ethnicity

POPULATION UNDER AGE 6 ¹	1,732	100.0%
White (non-Hispanic) ¹	1,605	92.7%
Black or African American ¹	4	0.2%
Asian ¹	9	0.5%
Other race ¹	31	1.8%
Multiracial ¹	40	2.3%
Hispanic or Latino (of any race) ¹	78	4.5%

Living Arrangements by Householder

POPULATION UNDER AGE 6 ¹	1,732	100.0%
Parent (including step-parents and adoptive parents) ¹	1,502	86.7%
Married parents (both present) ¹	1,016	58.7%
Single parent ¹	486	28.1%
Other relative (including grandparent) ¹	191	11.0%
Non-relative (foster parent, group quarters, other) ¹	39	2.3%

Parental Employment

UNDER AGE 6 WITH PARENT HOUSEHOLDER ⁹	1,687	100.0%
Both parents or only parent in labor force ⁹	1,232	73.0%
One parent in labor force, one not ⁹	424	25.1%
Neither parent in labor force ⁹	31	1.8%

Place of Birth and Nativity

UNDER AGE 6 WITH PARENT HOUSEHOLDER ⁹	1,687	100.0%
Native-born with native-born parents ⁹	1,682	99.7%
Native-born with 1 or more foreign-born parents ⁹	5	0.3%
Foreign-born with native-born parents ⁹	0	0.0%
Foreign-born with 1 or more foreign-born parents ⁹	0	0.0%

Children with Special Needs

UNDER AGE 3 WITH ACTIVE IFSP	16	100.0%
Diagnosed physical or mental condition ²	9	56.3%
Developmental delay ²	7	43.8%
POPULATION AGES 3 TO 5 ¹	887	100.0%
Preschool Special Education (PSE) enrollment ³	80	9.0%
Autism ¹⁰	1-9	-
Cognitive disabilities ¹⁰	1-9	-
Deafness (hearing impairments) ¹⁰	0	-
Developmental delay ¹⁰	11	-
Emotional disturbance (SBH) ¹⁰	1-9	-
Multiple disabilities (other than deaf-blind) ¹⁰	1-9	-
Orthopedic impairments ¹⁰	1-9	-
Other health impaired - minor ¹⁰	1-9	-
Specific learning disabilities ¹⁰	1-9	-
Speech and language impairments ¹⁰	12	-

Children Facing Economic Hardship

POPULATION UNDER AGE 6 ⁹	1,722	100.0%
Not economically disadvantaged ⁹	1,059	61.5%
Household income 100% to 199% FPL (low-income) ⁹	536	31.1%
Household income below 100% FPL (in poverty) ⁹	127	7.4%

ODE - TOTAL CHILDREN COUNTED (AGES 3-5) ⁴	29	100.0%
Not economically disadvantaged ⁴	10	34.5%
Household income 100% to 199% FPL (low-income) ⁴	13	44.8%
Household income below 100% FPL (in poverty) ⁴	6	20.7%

ODJFS - TOTAL CHILDREN COUNTED (UNDER AGE 6) ⁵	5	100.0%
Not economically disadvantaged ⁵	0	0.0%
Household income 100% to 199% FPL (low-income) ⁵	3	60.0%
Household income below 100% FPL (in poverty) ⁵	2	40.0%

Children with Limited English Proficiency

ODE - TOTAL CHILDREN COUNTED (AGES 3-5) ⁴	111	100.0%
English proficient ⁴	111	100.0%
Limited English proficiency ⁴	0	0.0%

ODJFS - TOTAL CHILDREN COUNTED (UNDER AGE 6) ⁵	250	100.0%
English primary language ⁵	250	100.0%
Non-English primary language eligible ⁵	0	0.0%
Non-English primary language utilization ⁵	0	0.0%

Kindergarten Readiness

STUDENTS TESTED FOR KRA-L ¹¹	261	100.0%
Students scoring in KRA-L Band 1 ¹¹ (requiring intensive intervention and instruction)	36	13.8%

SELECTED INDICATORS BY SCHOOL DISTRICT, population under age 6

School district	Population under age 6	Economically disadvantaged	ODE spaces	ODE enrollment	ODJFS spaces	ODJFS enrollment
Carey	385	47.3%	21	0	38	65
Mohawk	432	16.4%	38	25	23	45
Riverdale	468	57.7%	21	26	85	73
Upper Sandusky	734	32.8%	58	19	69	140
Wynford	323	42.4%	38	27	63	60

For assistance interpreting the data in this county profile and detailed information about the sources and caveats, please review the [User Guide](#)

Sources

1. U.S. Census Bureau, Decennial, Census, 2010
2. Ohio Department of Health, Help Me Grow Early Intervention Child Count, July 2012
3. Ohio Department of Education, December, 2011 Child Counts
4. Ohio Department of Education, Spring Fiscal Year, 2012
5. Ohio Department of Jobs and Family Services, November, 2012
6. Ohio Department of Education, Active sites as of January 2013
7. Ohio Department of Education, Preschool Capacity and Enrollment, November 2012
8. Head Start, School Year, 2012-2013
9. U.S. Census Bureau, American Community Survey, 2007-2011, 5-year estimate
10. Ohio Department of Education, School Year 2011-2012
11. Ohio Department of Education, Interactive Local Report Card, School Year 2010-2011
12. U.S. Census Bureau, Intercensal Population Estimates, 2000-2010