

Early Learning and Development County Profile User Guide

This user's guide provides supplemental information to help readers' better understand the data contained in the Early Learning and Development County Profiles. It is designed to give a broad overview of the profile's layout, supply source and definitional information, and detail data caveats.

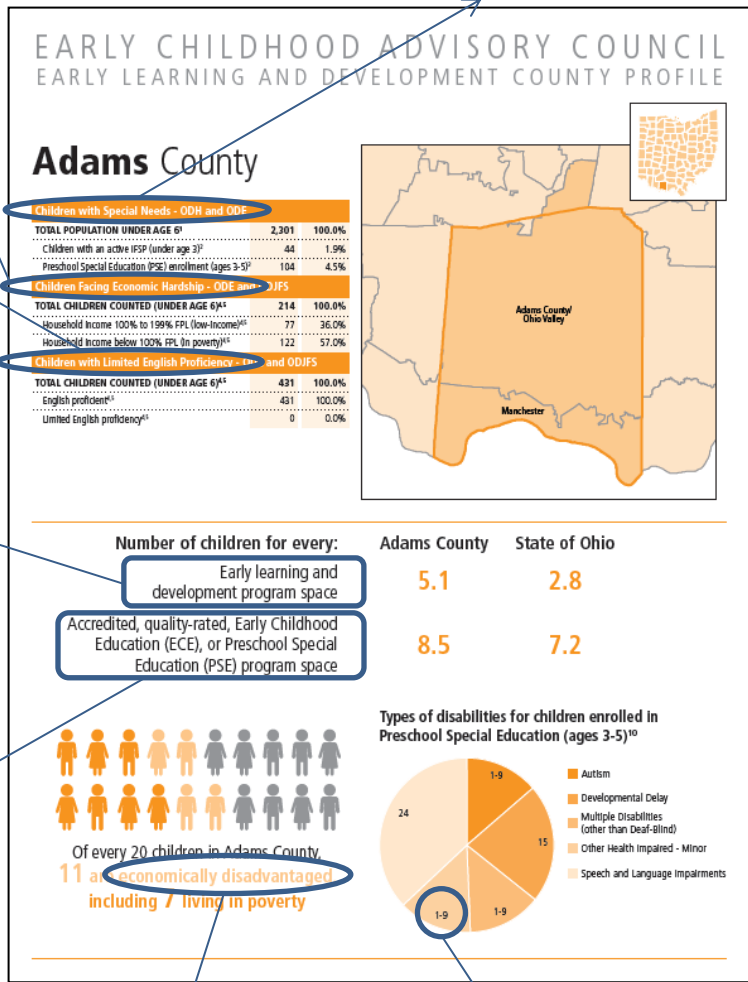
The measure of **children facing economic hardship** includes data from all parents who provided economic status information for children enrolled in ODJFS licensed child care centers and ODE licensed preschools. **Note:** ODE and ODJFS economic hardship data included in these profiles are not inclusive of all children enrolled in an ODJFS licensed child care center or ODE preschool, as a significant number of parents chose not to provide economic status information for their enrolled child.

Children with **special needs** are those identified as having a disability including developmental delay. **Note:** only ODE data were used to represent children with special needs aged 3 to 5. ODE Preschool Special Education (PSE) enrollment data were used because special needs are self-reported by parents in ODJFS programs, making the data less reliable than the standards employed by ODE, which only includes children with an Individualized Education Program (IEP).

The measure of **children with limited English proficiency** includes the count of all children eligible for English language programs among those enrolled in a child care center licensed by ODJFS combined with the count of children participating in the English Language Learner program offered by licensed ODE preschools.

Early learning and development spaces are the total number of spaces in child care centers licensed by ODJFS combined with the total number of preschool program spaces licensed by ODE.

Accredited, quality-rated, ECE or PSE program spaces are the total number of spaces in licensed child care centers that are accredited and/or quality-rated by ODJFS combined with the total Early Childhood Education (ECE) and Preschool Special Education (PSE) spaces funded by the ODE.



Economically disadvantaged are children living in a household where the income falls below 200 percent of the Federal Poverty Level.
Source: U.S. Census Bureau, American Community Survey, 2007-2011, 5-year estimate.

Data range: ODE suppresses data for any disability that is reported for fewer than ten children in a county, the data range of "1-9" is used to represent these instances. A disability with a record of "0" means no children were reported as being affected by the disability.

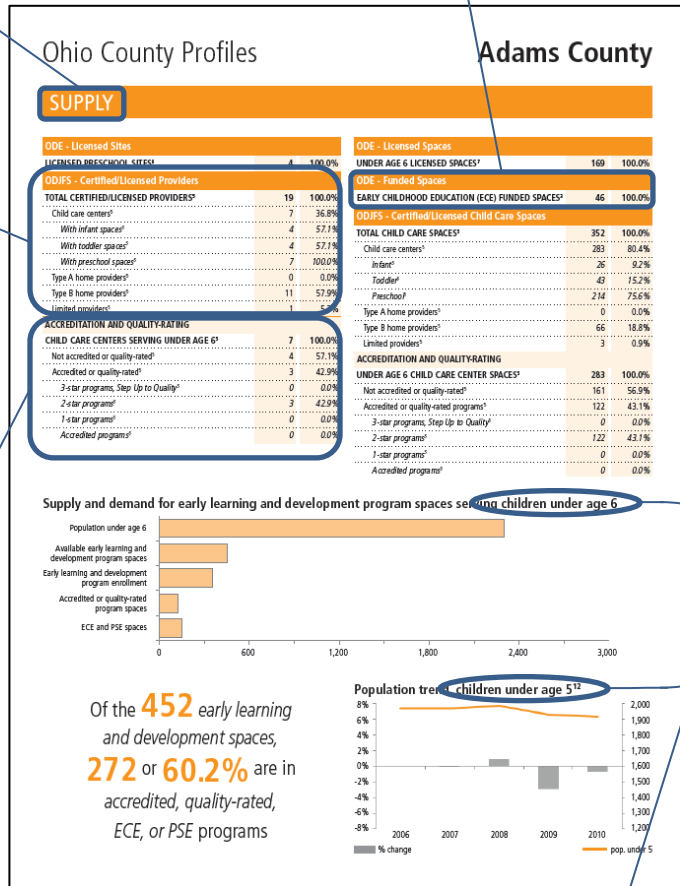
Early Learning and Development County Profile User Guide

Overview of **current supply**: this section provides data on both the number of early learning and development sites and spaces located in the county. The left column focuses on the total number and quality of ODE and ODJFS **sites**, while the right focuses on the total number and quality of **spaces** in these sites.

Early Childhood Education (ECE) spaces funded by ODE adhere to Ohio's Early Learning Program Guidelines and Pre-kindergarten Content Standards, which ensures that these spaces are in high-quality programs. For more information see <http://education.ohio.gov/>

ODJFS is responsible for licensing different types of child care providers. Both **Child care centers** and **Type A home providers** are required to be licensed by ODJFS. **Type B home providers** and **Limited providers** are required to be certified by their local Jobs and Family Services centers. For more information on provider types see <http://jfs.ohio.gov/>

Step Up To Quality is a voluntary quality rating system in which ODJFS recognizes licensed providers that exceed quality benchmarks over and above state licensing standards. Programs are rated from 1-star to 3-stars (highest quality). In addition, providers that exceed state license requirements may seek accreditation from a number of other recognized organizations. For more on accreditation and quality rating systems see <http://jfs.ohio.gov/>



Following the U.S. Census Bureau's recommendation, data from the Intercensal Population Estimates were utilized to portray population trends instead of using American Community Survey (ACS) data. However, it should be noted that data from the ACS and Intercensal Population Estimates are reported by different age groupings. This is why the supply and demand graph above reports data on **children under age 6**, while the population trend graph reports data on **children under age 5**.

Early Learning and Development County Profile User Guide

As explained on Page 1, only ODE data were used for **children with special needs** age 3 to 5 because ODJFS special needs data are self-reported by parents and less reliable than ODE's method of data collection.

Overview of **current demand of high needs populations**: this section provides data on children using ODJFS and ODE programs that are designed to support the following high needs groups: those diagnosed with special needs; facing economic hardship; and limited English proficiency.

Overview of **current demand**: this section contains data on enrollment in ODE preschools, ODJFS child care centers and Head Start programs.

Overview of **potential demand**: this section contains general demographic data from the U.S. Census Bureau on the county's population under age 6.

As described on Page 1, ODE and ODJFS counts for **children facing economic hardship** are much lower than total enrollment because a significant number of parents chose not to share economic status information.

Ohio County Profiles

Adams County

DEMAND		Adams County	
ODE - Licensed Site Enrollment		Children with Special Needs	
UNDER AGE 6 ENROLLMENT ^a	144 100.0%	UNDER AGE 3 WITH ACTIVE IFSP	44 100.0%
ODJFS - Licensed Center Enrollment		Diagnosed physical or mental condition ^b	20 45.5%
UNDER AGE 6 ENROLLMENT ^a	210 100.0%	Developmental delay ^b	24 54.5%
Head Start Enrollment		POPULATION AGES 3 TO 5^c	1,170 100.0%
TOTAL HEAD START ENROLLMENT ^a	174 100.0%	Autism ^d	1-9
Early Head Start (EHS) enrollment (under age 3) ^e	41 23.6%	Cognitive disabilities ^d	1-9
Head Start enrollment (ages 3 to 5) ^f	133 76.4%	Deafness/hearing impairments ^d	1-9
		Developmental delay ^d	15
		Emotional disturbance (SED) ^d	0
		Multiple disabilities (other than deaf/blind) ^d	1-9
		Orthopedic impairments ^d	1-9
		Other health impaired - minor ^d	1-9
		Specific learning disabilities ^d	0
		Speech and language impairments ^d	24
		Children Facing Economic Hardship	
Children by Age		POPULATION UNDER AGE 6 ^g	2,250 100.0%
POPULATION UNDER AGE 6 ^g	2,301 100.0%	Not economically disadvantaged ^h	987 43.9%
Population under age 3 ^g	1,131 49.2%	Household income 100% to 199% FPL (low-income) ^h	63 40.4%
Population ages 3 to 5 ^g	1,170 50.8%	Household income below 100% FPL (in poverty) ^h	78 50.0%
Change, 2000-2010 ^g	186 8.8%	ODE - TOTAL CHILDREN COUNTED (AGES 3-5)ⁱ	156 100.0%
Children by Race and Ethnicity		Not economically disadvantaged ^h	15 9.6%
POPULATION UNDER AGE 6 ^g	2,301 100.0%	Household income 100% to 199% FPL (low-income) ^h	471 20.9%
White (non-Hispanic) ^j	2,209 96.0%	Household income below 100% FPL (in poverty) ^h	78 35.2%
Black or African American ^j	9 0.4%	ODJFS - TOTAL CHILDREN COUNTED (UNDER AGE 6)^k	58 100.0%
Asian ^j	2 0.1%	Not economically disadvantaged ^l	0 0.0%
Other race ^j	20 0.9%	Household income 100% to 199% FPL (low-income) ^l	14 24.1%
Multiracial ^j	43 1.9%	Household income below 100% FPL (in poverty) ^l	44 75.9%
Hispanic or Latino (of any race) ^j	36 1.6%	Children with Limited English Proficiency	
Living Arrangements by Householder		ODE - TOTAL CHILDREN COUNTED (AGES 3-5) ⁱ	221 100.0%
POPULATION UNDER AGE 6 ^g	2,301 100.0%	Limited English proficiency ^m	0 0.0%
Parent (including step-parents and adoptive parents) ⁿ	1,848 80.3%	ODJFS - TOTAL CHILDREN COUNTED (UNDER AGE 6)^k	210 100.0%
Married parents (both present) ⁿ	1,221 53.1%	English primary language ⁿ	210 100.0%
Single parent ⁿ	627 27.2%	Non-English primary language eligible ⁿ	0 0.0%
Other relative (including grandparents) ⁿ	478 16.4%	Non-English primary language utilization ⁿ	0 0.0%
Non-relative (foster parent, group quarters, other) ⁿ	75 3.3%	Kindergarten Readiness	
Parental Employment		STUDENTS TESTED FOR KRA-L^o	368 100.0%
UNDER AGE 6 WITH PARENT HOUSEHOLDER ^o	2,149 100.0%	Students scoring in KRA-L Band 1 ^o (requiring intensive intervention and instruction)	92 25.0%
Both parents or only parent (not foster) ^o	1,322 61.5%		
Neither parent in labor force ^o	325 15.1%		
Place of Birth and Nativity			
UNDER AGE 6 WITH PARENT HOUSEHOLDER ^o	2,149 100.0%		
Native-born with native-born parents ^p	2,136 99.4%		
One parent in labor force, one not ^o	302 23.4%		
Native-born with 1 or more foreign-born parents ^p	13 0.6%		
Foreign-born with native-born parents ^p	0 0.0%		
Foreign-born with 1 or more foreign-born parents ^p	0 0.0%		

Kindergarten Readiness Assessment – Literacy (KRA-L) is an assessment tool used to help teachers identify the reading skills of all children entering kindergarten for the first time. KRA-L results are grouped into 3 bands, with Band 1 representing the lowest and Band 3 the highest performance measure.

Early Learning and Development County Profile User Guide

Throughout Ohio, the boundaries of a large number of school districts fall in two or more counties. To avoid including school district data in a county in which the given district has only a marginal presence, a minimum population threshold was employed. School districts were included in a county's school district analysis if 20% or more of the school district's population resided within the county.

For example, the Delphos school district has portions located in both Allen and Van Wert counties. Of those living in the district, 57.3% live in Allen County and 42.7% in Van Wert County. In this instance, Delphos would be included in the school district analysis for both Allen and Van Wert counties because each houses 20% or more of the district's population. Since some school districts appear on multiple profiles, school district data should not be aggregated to produce state totals. For state totals, see the Ohio Statewide profile.

ODJFS spaces are the total number of spaces in ODJFS licensed child care centers that are located within a given school district.

In many cases, there are **more children enrolled** in an ODJFS child care center **than there are available spaces**. This is possible because one program space may be filled by two or more children that each attends the center for part of the day. For example, the enrollment data would count two children in one program space if one child attended during the day and another after school, thus those two enrolled children combine to fill one full program space.

Ohio County Profiles

Allen County

SELECTED INDICATORS BY SCHOOL DISTRICT, population under age 6

School district	Population under age 6	Economically disadvantaged	ODE spaces	ODE enrollment	ODJFS spaces	ODJFS enrollment
Allen East	545	49.2%	0	0	18	17
Bath	821	30.0%	129	98	224	159
Bluffton	414	31.4%	0	0	75	51
Delphos	782	51.7%	108	80	118	125
Elida	1,601	55.2%	182	54	511	323
Lima	2,948	83.4%	213	148	822	661
Perry	151	55.0%	0	0	16	16
Shawnee	1,078	21.2%	0	0	347	293
Spencerville	296	40.5%	56	49	47	36

ODE spaces are the total number of spaces in ODE licensed preschools that are located within a given school district.

Additional Notes and Definitions

ODJFS: Ohio Department of Jobs and Family Services

ODH: Ohio Department of Health

ODE: Ohio Department of Education

IFSP: Individualized Family Service Plan

ECE: Early Childhood Education

PSE: Preschool Special Education

Data note: All data from the American Community Survey (ACS) are estimates that are samples of a full population. Due to sampling error, all data records from the ACS are published with a Margin of Error. For the sake of profile readability, Community Research Partners chose not to include the Margin of Error and/or confidence intervals with the ACS estimates contained in the county profiles. For more information about Margin of Error, or to find the Margin of Error for data presented in the profiles, visit <http://www.census.gov/acs>

Note: CRP has been careful in collecting, analyzing, and presenting data from a variety of sources to prepare this report. While we have been meticulous in our methods and attempted to identify and resolve all data issues, CRP is not responsible for the accuracy of original data or how it may be used or interpreted. If careful readers of the report discover data or typographical errors, CRP welcomes this feedback and will incorporate corrections into future updates of the report.