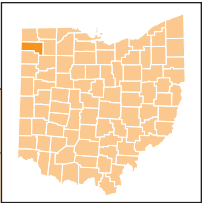


EARLY CHILDHOOD ADVISORY COUNCIL EARLY LEARNING AND DEVELOPMENT COUNTY PROFILE

Defiance County



| Children with Special Needs - ODH and ODE | | |
|--|--------------|---------------|
| TOTAL POPULATION UNDER AGE 6¹ | 2,985 | 100.0% |
| Children with an active IFSP (under age 3) ² | 29 | 1.0% |
| Preschool Special Education (PSE) enrollment (ages 3-5) ³ | 124 | 4.2% |
| Children Facing Economic Hardship - ODE and ODJFS | | |
| TOTAL CHILDREN COUNTED (UNDER AGE 6)^{4,5} | 111 | 100.0% |
| Household income 100% to 199% FPL (low-income) ^{4,5} | 28 | 25.2% |
| Household income below 100% FPL (in poverty) ^{4,5} | 83 | 74.8% |
| Children with Limited English Proficiency - ODE and ODJFS | | |
| TOTAL CHILDREN COUNTED (UNDER AGE 6)^{4,5} | 598 | 100.0% |
| English proficient ^{4,5} | 598 | 100.0% |
| Limited English proficiency ^{4,5} | 0 | 0.0% |

Number of children for every:

Early learning and development program space

Accredited, quality-rated, Early Childhood Education (ECE), or Preschool Special Education (PSE) program space

Defiance County

State of Ohio

3.3

2.8

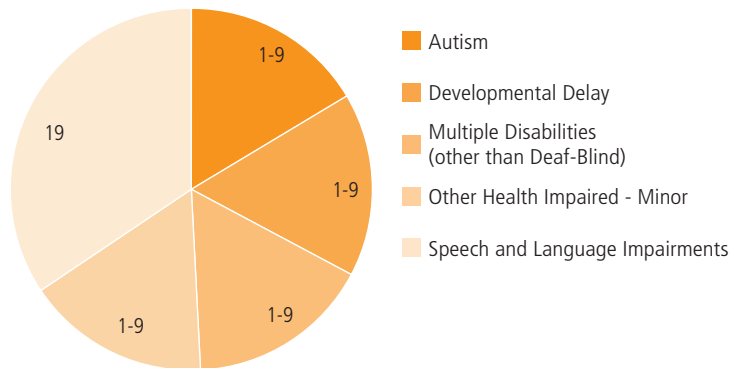
8.0

7.2



Of every 20 children in Defiance County, **10** are economically disadvantaged, including **6** living in poverty

Types of disabilities for children enrolled in Preschool Special Education (ages 3-5)¹⁰



SUPPLY

ODE - Licensed Sites

LICENSED PRESCHOOL SITES⁶ **7** **100.0%**

ODJFS - Certified/Licensed Providers

TOTAL CERTIFIED/LICENSED PROVIDERS⁵ **31** **100.0%**

| | | |
|------------------------------------|----|-------|
| Child care centers ⁵ | 13 | 41.9% |
| With infant spaces ⁵ | 5 | 38.5% |
| With toddler spaces ⁵ | 8 | 61.5% |
| With preschool spaces ⁵ | 12 | 92.3% |
| Type A home providers ⁵ | 1 | 3.2% |
| Type B home providers ⁵ | 13 | 41.9% |
| Limited providers ⁵ | 4 | 12.9% |

ACCREDITATION AND QUALITY-RATING

CHILD CARE CENTERS SERVING UNDER AGE 6⁵ **13** **100.0%**

| | | |
|--|---|-------|
| Not accredited or quality-rated ⁵ | 9 | 69.2% |
| Accredited or quality-rated ⁵ | 4 | 30.8% |
| 3-star programs, Step Up to Quality ⁵ | 1 | 7.7% |
| 2-star programs ⁵ | 1 | 7.7% |
| 1-star programs ⁵ | 2 | 15.4% |
| Accredited programs ⁵ | 0 | 0.0% |

ODE - Licensed Spaces

UNDER AGE 6 LICENSED SPACES⁷ **363** **100.0%**

ODE - Funded Spaces

EARLY CHILDHOOD EDUCATION (ECE) FUNDED SPACES³ **0** **100.0%**

ODJFS - Certified/Licensed Child Care Spaces

TOTAL CHILD CARE SPACES⁵ **643** **100.0%**

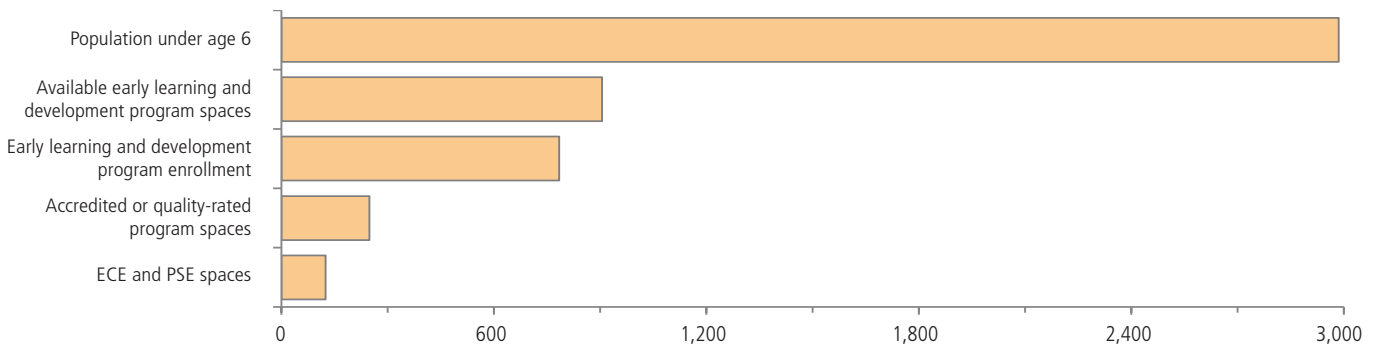
| | | |
|------------------------------------|-----|-------|
| Child care centers ⁵ | 542 | 84.3% |
| Infant ⁵ | 43 | 7.9% |
| Toddler ⁵ | 99 | 18.3% |
| Preschool ⁵ | 400 | 73.8% |
| Type A home providers ⁵ | 8 | 1.2% |
| Type B home providers ⁵ | 78 | 12.1% |
| Limited providers ⁵ | 15 | 2.3% |

ACCREDITATION AND QUALITY-RATING

UNDER AGE 6 CHILD CARE CENTER SPACES⁵ **542** **100.0%**

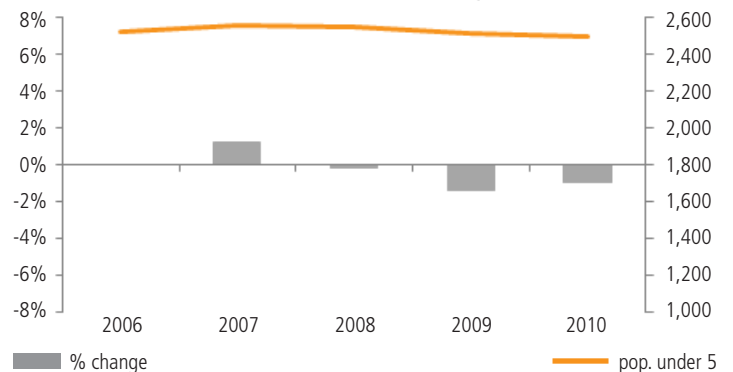
| | | |
|---|-----|-------|
| Not accredited or quality-rated ⁵ | 294 | 54.2% |
| Accredited or quality-rated programs ⁵ | 248 | 45.8% |
| 3-star programs, Step Up to Quality ⁵ | 96 | 17.7% |
| 2-star programs ⁵ | 42 | 7.7% |
| 1-star programs ⁵ | 110 | 20.3% |
| Accredited programs ⁵ | 0 | 0.0% |

Supply and demand for early learning and development program spaces serving children under age 6



Of the **905** early learning and development spaces, **372** or **41.1%** are in accredited, quality-rated, ECE, or PSE programs

Population trend, children under age 5¹²



DEMAND

ODE - Licensed Site Enrollment

| | | |
|---|------------|---------------|
| UNDER AGE 6 ENROLLMENT⁷ | 332 | 100.0% |
|---|------------|---------------|

ODJFS - Licensed Center Enrollment

| | | |
|---|------------|---------------|
| UNDER AGE 6 ENROLLMENT⁵ | 452 | 100.0% |
|---|------------|---------------|

Head Start Enrollment

| | | |
|--|-----------|---------------|
| TOTAL HEAD START ENROLLMENT⁸ | 96 | 100.0% |
| Early Head Start (EHS) enrollment (under age 3) ⁸ | 0 | 0.0% |
| Head Start enrollment (ages 3 to 5) ⁸ | 96 | 100.0% |

Children by Age

| | | |
|---|--------------|---------------|
| POPULATION UNDER AGE 6¹ | 2,985 | 100.0% |
| Population under age 3 ¹ | 1,454 | 48.7% |
| Population ages 3 to 5 ¹ | 1,531 | 51.3% |
| Change, 2000–2010 ¹ | -271 | -8.3% |

Children by Race and Ethnicity

| | | |
|---|--------------|---------------|
| POPULATION UNDER AGE 6¹ | 2,985 | 100.0% |
| White (non-Hispanic) ¹ | 2,350 | 78.7% |
| Black or African American ¹ | 63 | 2.1% |
| Asian ¹ | 8 | 0.3% |
| Other race ¹ | 104 | 3.5% |
| Multiracial ¹ | 178 | 6.0% |
| Hispanic or Latino (of any race) ¹ | 491 | 16.4% |

Living Arrangements by Householder

| | | |
|---|--------------|---------------|
| POPULATION UNDER AGE 6¹ | 2,985 | 100.0% |
| Parent (including step-parents and adoptive parents) ¹ | 2,598 | 87.0% |
| <i>Married parents (both present)¹</i> | 1,833 | 61.4% |
| <i>Single parent¹</i> | 765 | 25.6% |
| Other relative (including grandparent) ¹ | 324 | 10.9% |
| Non-relative (foster parent, group quarters, other) ¹ | 63 | 2.1% |

Parental Employment

| | | |
|---|--------------|---------------|
| UNDER AGE 6 WITH PARENT HOUSEHOLDER⁹ | 2,919 | 100.0% |
| Both parents or only parent in labor force ⁹ | 2,107 | 72.2% |
| One parent in labor force, one not ⁹ | 588 | 20.1% |
| Neither parent in labor force ⁹ | 224 | 7.7% |

Place of Birth and Nativity

| | | |
|---|--------------|---------------|
| UNDER AGE 6 WITH PARENT HOUSEHOLDER⁹ | 2,919 | 100.0% |
| Native-born with native-born parents ⁹ | 2,738 | 93.8% |
| Native-born with 1 or more foreign-born parents ⁹ | 154 | 5.3% |
| Foreign-born with native-born parents ⁹ | 8 | 0.3% |
| Foreign-born with 1 or more foreign-born parents ⁹ | 19 | 0.7% |

Children with Special Needs

| | | |
|---|--------------|---------------|
| UNDER AGE 3 WITH ACTIVE IFSP | 29 | 100.0% |
| Diagnosed physical or mental condition ² | 14 | 48.3% |
| Developmental delay ² | 15 | 51.7% |
| POPULATION AGES 3 TO 5¹ | 1,531 | 100.0% |
| Preschool Special Education (PSE) enrollment ³ | 124 | 8.1% |
| <i>Autism¹⁰</i> | 1-9 | - |
| <i>Cognitive disabilities¹⁰</i> | 1-9 | - |
| <i>Deafness (hearing impairments)¹⁰</i> | 1-9 | - |
| <i>Developmental delay¹⁰</i> | 1-9 | - |
| <i>Emotional disturbance (SBH)¹⁰</i> | 0 | - |
| <i>Multiple disabilities (other than deaf-blind)¹⁰</i> | 1-9 | - |
| <i>Orthopedic impairments¹⁰</i> | 1-9 | - |
| <i>Other health impaired - minor¹⁰</i> | 1-9 | - |
| <i>Specific learning disabilities¹⁰</i> | 1-9 | - |
| <i>Speech and language impairments¹⁰</i> | 19 | - |

Children Facing Economic Hardship

| | | |
|---|--------------|---------------|
| POPULATION UNDER AGE 6⁹ | 2,978 | 100.0% |
| Not economically disadvantaged ⁹ | 1,498 | 50.3% |
| Household income 100% to 199% FPL (low-income) ⁹ | 603 | 20.2% |
| Household income below 100% FPL (in poverty) ⁹ | 877 | 29.4% |

| | | |
|---|-----------|---------------|
| ODE - TOTAL CHILDREN COUNTED (AGES 3-5)⁴ | 20 | 100.0% |
| Not economically disadvantaged ⁴ | 0 | 0.0% |
| Household income 100% to 199% FPL (low-income) ⁴ | 0 | 0.0% |
| Household income below 100% FPL (in poverty) ⁴ | 20 | 100.0% |

| | | |
|---|-----------|---------------|
| ODJFS - TOTAL CHILDREN COUNTED (UNDER AGE 6)⁵ | 91 | 100.0% |
| Not economically disadvantaged ⁵ | 0 | 0.0% |
| Household income 100% to 199% FPL (low-income) ⁵ | 28 | 30.8% |
| Household income below 100% FPL (in poverty) ⁵ | 63 | 69.2% |

Children with Limited English Proficiency

| | | |
|---|------------|---------------|
| ODE - TOTAL CHILDREN COUNTED (AGES 3-5)⁴ | 146 | 100.0% |
| English proficient ⁴ | 146 | 100.0% |
| Limited English proficiency ⁴ | 0 | 0.0% |
| ODJFS - TOTAL CHILDREN COUNTED (UNDER AGE 6)⁵ | 452 | 100.0% |
| English primary language ⁵ | 452 | 100.0% |
| Non-English primary language eligible ⁵ | 0 | 0.0% |
| <i>Non-English primary language utilization⁵</i> | 0 | 0.0% |

Kindergarten Readiness

| | | |
|--|------------|---------------|
| STUDENTS TESTED FOR KRA-L¹¹ | 490 | 100.0% |
| Students scoring in KRA-L Band 1 ¹¹ (requiring intensive intervention and instruction) | 93 | 19.0% |

SELECTED INDICATORS BY SCHOOL DISTRICT, population under age 6

| School district | Population under age 6 | Economically disadvantaged | ODE spaces | ODE enrollment | ODJFS spaces | ODJFS enrollment |
|-----------------|------------------------|----------------------------|------------|----------------|--------------|------------------|
| Ayersville | 250 | 41.6% | 129 | 108 | 73 | 55 |
| Central | 476 | 57.1% | 23 | 22 | 28 | 24 |
| Defiance | 1,391 | 49.7% | 181 | 174 | 277 | 224 |
| Hicksville | 378 | 67.7% | 30 | 28 | 77 | 63 |
| Northeastern | 512 | 30.5% | 0 | 0 | 87 | 86 |

For assistance interpreting the data in this county profile and detailed information about the sources and caveats, please review the [User Guide](#)

Sources

1. U.S. Census Bureau, Decennial, Census, 2010
2. Ohio Department of Health, Help Me Grow Early Intervention Child Count, July 2012
3. Ohio Department of Education, December, 2011 Child Counts
4. Ohio Department of Education, Spring Fiscal Year, 2012
5. Ohio Department of Jobs and Family Services, November, 2012
6. Ohio Department of Education, Active sites as of January 2013
7. Ohio Department of Education, Preschool Capacity and Enrollment, November 2012
8. Head Start, School Year, 2012-2013
9. U.S. Census Bureau, American Community Survey, 2007-2011, 5-year estimate
10. Ohio Department of Education, School Year 2011-2012
11. Ohio Department of Education, Interactive Local Report Card, School Year 2010-2011
12. U.S. Census Bureau, Intercensal Population Estimates, 2000-2010