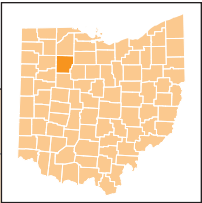


EARLY CHILDHOOD ADVISORY COUNCIL EARLY LEARNING AND DEVELOPMENT COUNTY PROFILE

Hancock County



Children with Special Needs - ODH and ODE

TOTAL POPULATION UNDER AGE 6¹	5,638	100.0%
Children with an active IFSP (under age 3) ²	76	1.3%
Preschool Special Education (PSE) enrollment (ages 3-5) ³	249	4.4%

Children Facing Economic Hardship - ODE and ODJFS

TOTAL CHILDREN COUNTED (UNDER AGE 6)^{4,5}	370	100.0%
Household income 100% to 199% FPL (low-income) ^{4,5}	149	40.3%
Household income below 100% FPL (in poverty) ^{4,5}	214	57.8%

Children with Limited English Proficiency - ODE and ODJFS

TOTAL CHILDREN COUNTED (UNDER AGE 6)^{4,5}	1,425	100.0%
English proficient ^{4,5}	1,423	99.9%
Limited English proficiency ^{4,5}	2	0.1%

Number of children for every:

Early learning and development program space

Accredited, quality-rated, Early Childhood Education (ECE), or Preschool Special Education (PSE) program space

Hancock County

3.0

State of Ohio

2.8

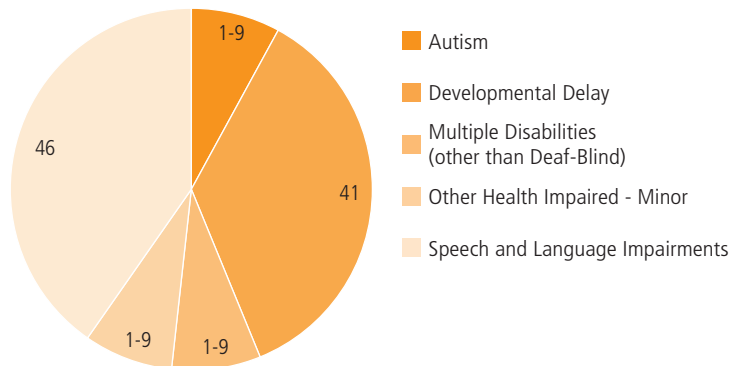
5.7

7.2



Of every 20 children in Hancock County,
10 are economically disadvantaged,
including **5** living in poverty

Types of disabilities for children enrolled in Preschool Special Education (ages 3-5)¹⁰



SUPPLY

ODE - Licensed Sites

LICENSED PRESCHOOL SITES⁶ **12** **100.0%**

ODJFS - Certified/Licensed Providers

TOTAL CERTIFIED/LICENSED PROVIDERS⁵ **52** **100.0%**

Child care centers ⁵	24	46.2%
With infant spaces ⁵	11	45.8%
With toddler spaces ⁵	16	66.7%
With preschool spaces ⁵	24	100.0%
Type A home providers ⁵	0	0.0%
Type B home providers ⁵	24	46.2%
Limited providers ⁵	4	7.7%

ACCREDITATION AND QUALITY-RATING

CHILD CARE CENTERS SERVING UNDER AGE 6⁵ **24** **100.0%**

Not accredited or quality-rated ⁵	15	62.5%
Accredited or quality-rated ⁵	9	37.5%
3-star programs, Step Up to Quality ⁵	1	4.2%
2-star programs ⁵	3	12.5%
1-star programs ⁵	5	20.8%
Accredited programs ⁵	0	0.0%

ODE - Licensed Spaces

UNDER AGE 6 LICENSED SPACES⁷ **471** **100.0%**

ODE - Funded Spaces

EARLY CHILDHOOD EDUCATION (ECE) FUNDED SPACES³ **0** **100.0%**

ODJFS - Certified/Licensed Child Care Spaces

TOTAL CHILD CARE SPACES⁵ **1,554** **100.0%**

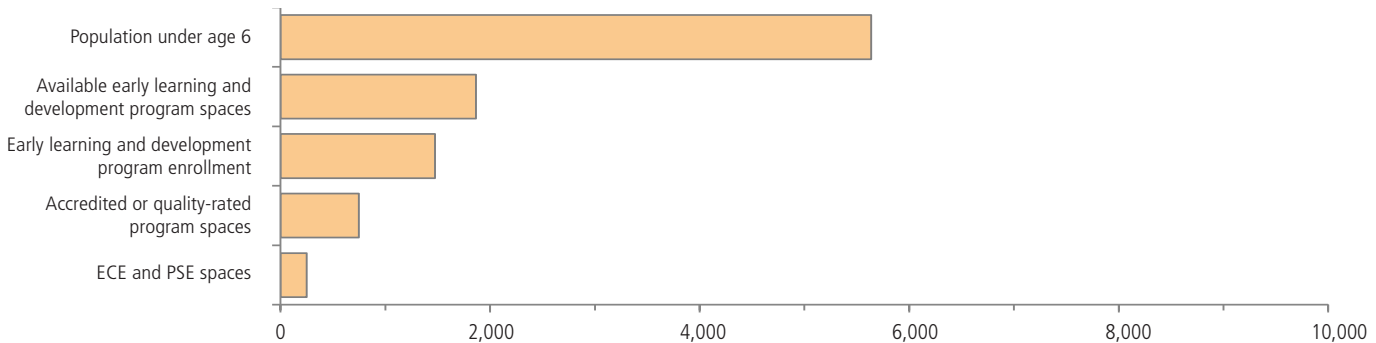
Child care centers ⁵	1,395	89.8%
Infant ⁵	142	10.2%
Toddler ⁵	279	20.0%
Preschool ⁵	974	69.8%
Type A home providers ⁵	0	0.0%
Type B home providers ⁵	138	8.9%
Limited providers ⁵	21	1.4%

ACCREDITATION AND QUALITY-RATING

UNDER AGE 6 CHILD CARE CENTER SPACES⁵ **1,395** **100.0%**

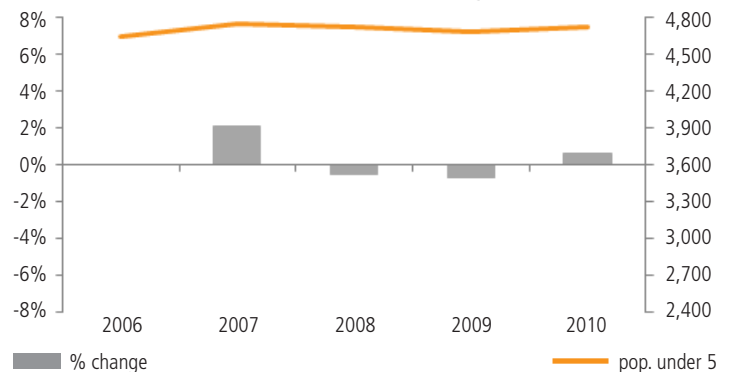
Not accredited or quality-rated ⁵	647	46.4%
Accredited or quality-rated programs ⁵	748	53.6%
3-star programs, Step Up to Quality ⁵	46	3.3%
2-star programs ⁵	150	10.8%
1-star programs ⁵	552	39.6%
Accredited programs ⁵	0	0.0%

Supply and demand for early learning and development program spaces serving children under age 6



Of the **1,866** early learning and development spaces, **997** or **53.4%** are in accredited, quality-rated, ECE, or PSE programs

Population trend, children under age 5¹²



DEMAND

ODE - Licensed Site Enrollment

UNDER AGE 6 ENROLLMENT⁷	384	100.0%
---	------------	---------------

ODJFS - Licensed Center Enrollment

UNDER AGE 6 ENROLLMENT⁵	1,091	100.0%
---	--------------	---------------

Head Start Enrollment

TOTAL HEAD START ENROLLMENT⁸	140	100.0%
Early Head Start (EHS) enrollment (under age 3) ⁸	0	0.0%
Head Start enrollment (ages 3 to 5) ⁸	140	100.0%

Children by Age

POPULATION UNDER AGE 6¹	5,638	100.0%
Population under age 3 ¹	2,805	49.8%
Population ages 3 to 5 ¹	2,833	50.2%
Change, 2000–2010 ¹	-178	-3.1%

Children by Race and Ethnicity

POPULATION UNDER AGE 6¹	5,638	100.0%
White (non-Hispanic) ¹	4,651	82.5%
Black or African American ¹	110	2.0%
Asian ¹	98	1.7%
Other race ¹	132	2.3%
Multiracial ¹	343	6.1%
Hispanic or Latino (of any race) ¹	533	9.5%

Living Arrangements by Householder

POPULATION UNDER AGE 6¹	5,638	100.0%
Parent (including step-parents and adoptive parents) ¹	4,955	87.9%
<i>Married parents (both present)¹</i>	3,487	61.8%
<i>Single parent¹</i>	1,468	26.0%
Other relative (including grandparent) ¹	541	9.6%
Non-relative (foster parent, group quarters, other) ¹	142	2.5%

Parental Employment

UNDER AGE 6 WITH PARENT HOUSEHOLDER⁹	5,607	100.0%
Both parents or only parent in labor force ⁹	4,172	74.4%
One parent in labor force, one not ⁹	927	16.5%
Neither parent in labor force ⁹	508	9.1%

Place of Birth and Nativity

UNDER AGE 6 WITH PARENT HOUSEHOLDER⁹	5,607	100.0%
Native-born with native-born parents ⁹	5,261	93.8%
Native-born with 1 or more foreign-born parents ⁹	305	5.4%
Foreign-born with native-born parents ⁹	2	0.0%
Foreign-born with 1 or more foreign-born parents ⁹	39	0.7%

Children with Special Needs

UNDER AGE 3 WITH ACTIVE IFSP	76	100.0%
Diagnosed physical or mental condition ²	38	50.0%
Developmental delay ²	38	50.0%
POPULATION AGES 3 TO 5¹	2,833	100.0%
Preschool Special Education (PSE) enrollment ³	249	8.8%
<i>Autism¹⁰</i>	1-9	-
<i>Cognitive disabilities¹⁰</i>	1-9	-
<i>Deafness (hearing impairments)¹⁰</i>	1-9	-
<i>Developmental delay¹⁰</i>	41	-
<i>Emotional disturbance (SBH)¹⁰</i>	1-9	-
<i>Multiple disabilities (other than deaf-blind)¹⁰</i>	1-9	-
<i>Orthopedic impairments¹⁰</i>	1-9	-
<i>Other health impaired - minor¹⁰</i>	1-9	-
<i>Specific learning disabilities¹⁰</i>	1-9	-
<i>Speech and language impairments¹⁰</i>	46	-

Children Facing Economic Hardship

POPULATION UNDER AGE 6⁹	5,704	100.0%
Not economically disadvantaged ⁹	2,943	51.6%
Household income 100% to 199% FPL (low-income) ⁹	1,346	23.6%
Household income below 100% FPL (in poverty) ⁹	1,415	24.8%

ODE - TOTAL CHILDREN COUNTED (AGES 3-5)⁴	82	100.0%
Not economically disadvantaged ⁴	6	7.3%
Household income 100% to 199% FPL (low-income) ⁴	39	47.6%
Household income below 100% FPL (in poverty) ⁴	37	45.1%

ODJFS - TOTAL CHILDREN COUNTED (UNDER AGE 6)⁵	288	100.0%
Not economically disadvantaged ⁵	1	0.3%
Household income 100% to 199% FPL (low-income) ⁵	110	38.2%
Household income below 100% FPL (in poverty) ⁵	177	61.5%

Children with Limited English Proficiency

ODE - TOTAL CHILDREN COUNTED (AGES 3-5)⁴	334	100.0%
English proficient ⁴	334	100.0%
Limited English proficiency ⁴	0	0.0%

ODJFS - TOTAL CHILDREN COUNTED (UNDER AGE 6)⁵	1,091	100.0%
English primary language ⁵	1,089	99.8%
Non-English primary language eligible ⁵	2	0.2%
<i>Non-English primary language utilization⁵</i>	2	0.2%

Kindergarten Readiness

STUDENTS TESTED FOR KRA-L¹¹	777	100.0%
Students scoring in KRA-L Band 1 ¹¹ (requiring intensive intervention and instruction)	126	16.2%

SELECTED INDICATORS BY SCHOOL DISTRICT, population under age 6

School district	Population under age 6	Economically disadvantaged	ODE spaces	ODE enrollment	ODJFS spaces	ODJFS enrollment
Arcadia	238	37.0%	21	25	34	19
Arlington	346	30.9%	16	26	31	34
Cory-Rawson	251	66.9%	44	44	0	0
Findlay	3,320	55.1%	272	181	1,137	876
Liberty-Benton	630	48.3%	30	24	68	74
McComb	332	35.5%	33	34	0	0
Riverdale	468	57.7%	21	26	85	73
Van Buren	286	17.1%	34	24	64	60
Vanlue	115	19.1%	0	0	0	0

For assistance interpreting the data in this county profile and detailed information about the sources and caveats, please review the [User Guide](#)

Sources

1. U.S. Census Bureau, Decennial, Census, 2010
2. Ohio Department of Health, Help Me Grow Early Intervention Child Count, July 2012
3. Ohio Department of Education, December, 2011 Child Counts
4. Ohio Department of Education, Spring Fiscal Year, 2012
5. Ohio Department of Jobs and Family Services, November, 2012
6. Ohio Department of Education, Active sites as of January 2013
7. Ohio Department of Education, Preschool Capacity and Enrollment, November 2012
8. Head Start, School Year, 2012-2013
9. U.S. Census Bureau, American Community Survey, 2007-2011, 5-year estimate
10. Ohio Department of Education, School Year 2011-2012
11. Ohio Department of Education, Interactive Local Report Card, School Year 2010-2011
12. U.S. Census Bureau, Intercensal Population Estimates, 2000-2010