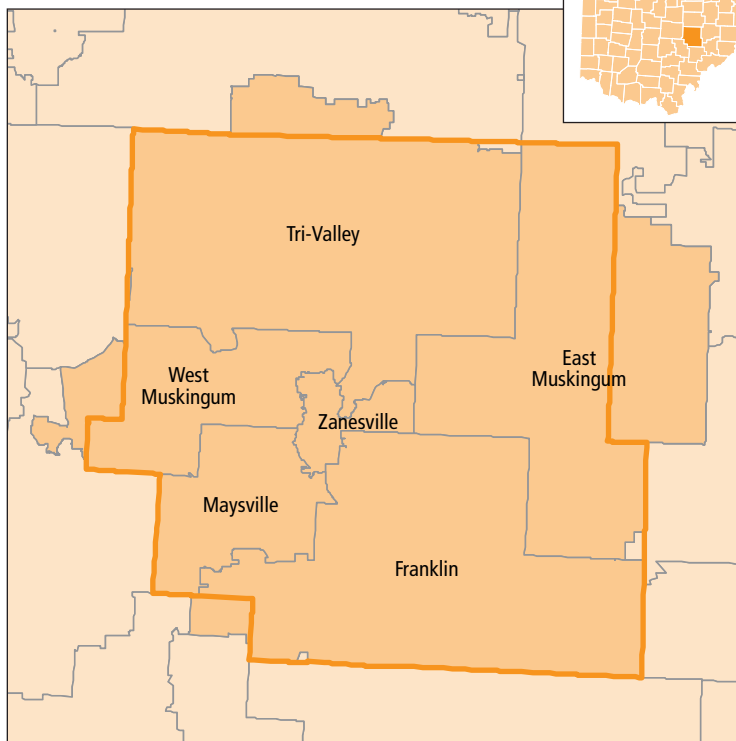
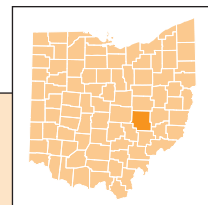


# EARLY CHILDHOOD ADVISORY COUNCIL EARLY LEARNING AND DEVELOPMENT COUNTY PROFILE

## Muskingum County



### Children with Special Needs - ODH and ODE

<b>TOTAL POPULATION UNDER AGE 6<sup>1</sup></b>	<b>6,375</b>	<b>100.0%</b>
Children with an active IFSP (under age 3) <sup>2</sup>	96	1.5%
Preschool Special Education (PSE) enrollment (ages 3-5) <sup>3</sup>	195	3.1%

### Children Facing Economic Hardship - ODE and ODJFS

<b>TOTAL CHILDREN COUNTED (UNDER AGE 6)<sup>4,5</sup></b>	<b>870</b>	<b>100.0%</b>
Household income 100% to 199% FPL (low-income) <sup>4,5</sup>	305	35.1%
Household income below 100% FPL (in poverty) <sup>4,5</sup>	454	52.2%

### Children with Limited English Proficiency - ODE and ODJFS

<b>TOTAL CHILDREN COUNTED (UNDER AGE 6)<sup>4,5</sup></b>	<b>1,651</b>	<b>100.0%</b>
English proficient <sup>4,5</sup>	1,650	99.9%
Limited English proficiency <sup>4,5</sup>	1	0.1%

### Number of children for every:

Early learning and development program space

Accredited, quality-rated, Early Childhood Education (ECE), or Preschool Special Education (PSE) program space

### Muskingum County

**3.9**

### State of Ohio

**2.8**

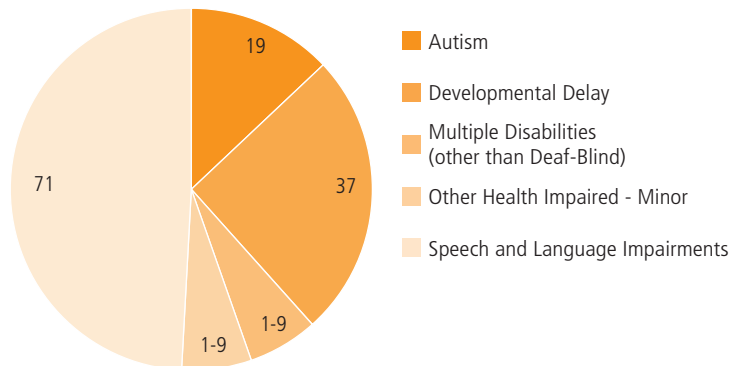
**10.0**

**7.2**



Of every 20 children in Muskingum County, **12** are economically disadvantaged, including **6** living in poverty

### Types of disabilities for children enrolled in Preschool Special Education (ages 3-5)



## SUPPLY

### ODE - Licensed Sites

LICENSED PRESCHOOL SITES<sup>6</sup> **13** **100.0%**

### ODJFS - Certified/Licensed Providers

TOTAL CERTIFIED/LICENSED PROVIDERS<sup>5</sup> **133** **100.0%**

Child care centers <sup>5</sup>	19	14.3%
With infant spaces <sup>5</sup>	6	31.6%
With toddler spaces <sup>5</sup>	10	52.6%
With preschool spaces <sup>5</sup>	18	94.7%
Type A home providers <sup>5</sup>	1	0.8%
Type B home providers <sup>5</sup>	96	72.2%
Limited providers <sup>5</sup>	17	12.8%

### ACCREDITATION AND QUALITY-RATING

CHILD CARE CENTERS SERVING UNDER AGE 6<sup>5</sup> **19** **100.0%**

Not accredited or quality-rated <sup>5</sup>	12	63.2%
Accredited or quality-rated <sup>5</sup>	7	36.8%
3-star programs, Step Up to Quality <sup>5</sup>	4	21.1%
2-star programs <sup>5</sup>	1	5.3%
1-star programs <sup>5</sup>	2	10.5%
Accredited programs <sup>5</sup>	0	0.0%

### ODE - Licensed Spaces

UNDER AGE 6 LICENSED SPACES<sup>7</sup> **608** **100.0%**

### ODE - Funded Spaces

EARLY CHILDHOOD EDUCATION (ECE) FUNDED SPACES<sup>3</sup> **152** **100.0%**

### ODJFS - Certified/Licensed Child Care Spaces

TOTAL CHILD CARE SPACES<sup>5</sup> **1,700** **100.0%**

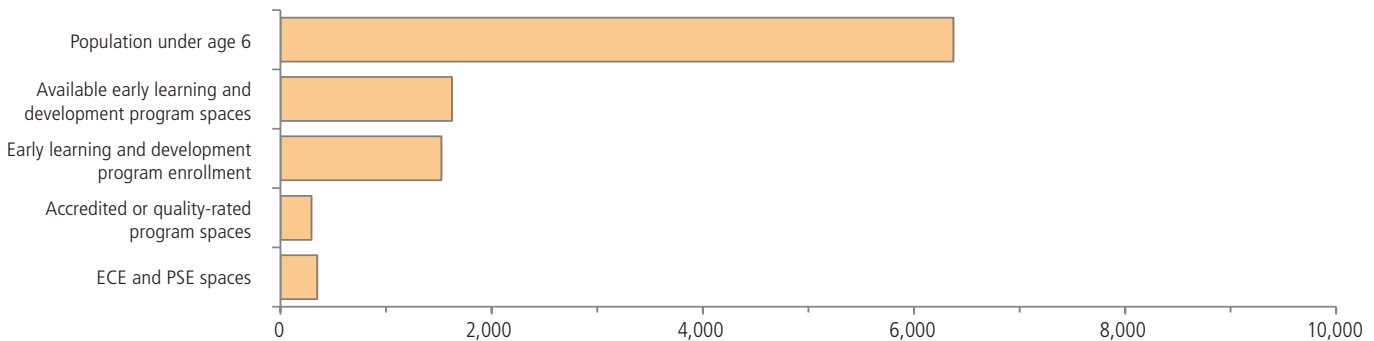
Child care centers <sup>5</sup>	1,015	59.7%
Infant <sup>5</sup>	86	8.5%
Toddler <sup>5</sup>	188	18.5%
Preschool <sup>5</sup>	741	73.0%
Type A home providers <sup>5</sup>	12	0.7%
Type B home providers <sup>5</sup>	571	33.6%
Limited providers <sup>5</sup>	102	6.0%

### ACCREDITATION AND QUALITY-RATING

UNDER AGE 6 CHILD CARE CENTER SPACES<sup>5</sup> **1,015** **100.0%**

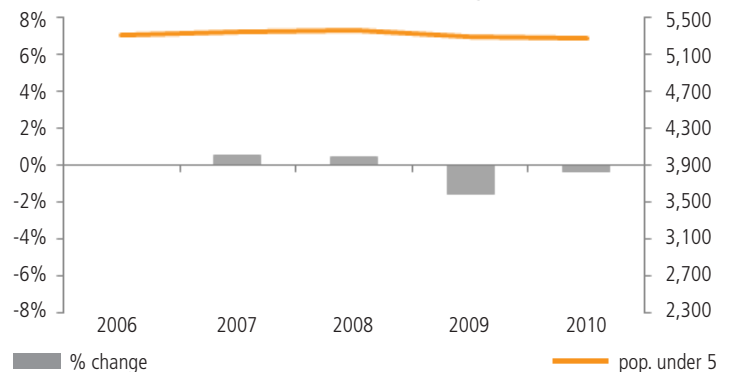
Not accredited or quality-rated <sup>5</sup>	723	71.2%
Accredited or quality-rated programs <sup>5</sup>	292	28.8%
3-star programs, Step Up to Quality <sup>5</sup>	130	12.8%
2-star programs <sup>5</sup>	17	1.7%
1-star programs <sup>5</sup>	145	14.3%
Accredited programs <sup>5</sup>	0	0.0%

## Supply and demand for early learning and development program spaces serving children under age 6



Of the **1,623** early learning and development spaces, **639** or **39.4%** are in accredited, quality-rated, ECE, or PSE programs

### Population trend, children under age 5<sup>12</sup>



## DEMAND

## ODE - Licensed Site Enrollment

<b>UNDER AGE 6 ENROLLMENT<sup>7</sup></b>	<b>488</b>	<b>100.0%</b>
---	------------	---------------

## ODJFS - Licensed Center Enrollment

<b>UNDER AGE 6 ENROLLMENT<sup>5</sup></b>	<b>1,036</b>	<b>100.0%</b>
---	--------------	---------------

## Head Start Enrollment

<b>TOTAL HEAD START ENROLLMENT<sup>8</sup></b>	<b>285</b>	<b>100.0%</b>
--	------------	---------------

Early Head Start (EHS) enrollment (under age 3) <sup>8</sup>	0	0.0%
--	---	------

Head Start enrollment (ages 3 to 5) <sup>8</sup>	285	100.0%
--	-----	--------

## Children by Age

<b>POPULATION UNDER AGE 6<sup>1</sup></b>	<b>6,375</b>	<b>100.0%</b>
---	--------------	---------------

Population under age 3 <sup>1</sup>	3,112	48.8%
-------------------------------------	-------	-------

Population ages 3 to 5 <sup>1</sup>	3,263	51.2%
-------------------------------------	-------	-------

Change, 2000–2010 <sup>1</sup>	-465	-6.8%
--------------------------------	------	-------

## Children by Race and Ethnicity

<b>POPULATION UNDER AGE 6<sup>1</sup></b>	<b>6,375</b>	<b>100.0%</b>
---	--------------	---------------

White (non-Hispanic) <sup>1</sup>	5,479	85.9%
-----------------------------------	-------	-------

Black or African American <sup>1</sup>	263	4.1%
--	-----	------

Asian <sup>1</sup>	27	0.4%
--------------------	----	------

Other race <sup>1</sup>	37	0.6%
-------------------------	----	------

Multiracial <sup>1</sup>	510	8.0%
--------------------------	-----	------

Hispanic or Latino (of any race) <sup>1</sup>	103	1.6%
---	-----	------

## Living Arrangements by Householder

<b>POPULATION UNDER AGE 6<sup>1</sup></b>	<b>6,375</b>	<b>100.0%</b>
---	--------------	---------------

Parent (including step-parents and adoptive parents) <sup>1</sup>	5,432	85.2%
---	-------	-------

<i>Married parents (both present)<sup>1</sup></i>	3,322	52.1%
---	-------	-------

<i>Single parent<sup>1</sup></i>	2,110	33.1%
----------------------------------	-------	-------

Other relative (including grandparent) <sup>1</sup>	794	12.5%
---	-----	-------

Non-relative (foster parent, group quarters, other) <sup>1</sup>	149	2.3%
--	-----	------

## Parental Employment

<b>UNDER AGE 6 WITH PARENT HOUSEHOLDER<sup>9</sup></b>	<b>6,318</b>	<b>100.0%</b>
--	--------------	---------------

Both parents or only parent in labor force <sup>9</sup>	4,410	69.8%
---	-------	-------

One parent in labor force, one not <sup>9</sup>	1,287	20.4%
---	-------	-------

Neither parent in labor force <sup>9</sup>	621	9.8%
--	-----	------

## Place of Birth and Nativity

<b>UNDER AGE 6 WITH PARENT HOUSEHOLDER<sup>9</sup></b>	<b>6,318</b>	<b>100.0%</b>
--	--------------	---------------

Native-born with native-born parents <sup>9</sup>	6,145	97.3%
---	-------	-------

Native-born with 1 or more foreign-born parents <sup>9</sup>	152	2.4%
--	-----	------

Foreign-born with native-born parents <sup>9</sup>	11	0.2%
--	----	------

Foreign-born with 1 or more foreign-born parents <sup>9</sup>	10	0.2%
---	----	------

## Children with Special Needs

<b>UNDER AGE 3 WITH ACTIVE IFSP</b>	<b>96</b>	<b>100.0%</b>
-------------------------------------	-----------	---------------

Diagnosed physical or mental condition <sup>2</sup>	56	58.3%
---	----	-------

Developmental delay <sup>2</sup>	40	41.7%
----------------------------------	----	-------

<b>POPULATION AGES 3 TO 5<sup>1</sup></b>	<b>3,263</b>	<b>100.0%</b>
---	--------------	---------------

Preschool Special Education (PSE) enrollment <sup>3</sup>	195	6.0%
---	-----	------

<i>Autism<sup>10</sup></i>	19	-
----------------------------	----	---

<i>Cognitive disabilities<sup>10</sup></i>	1-9	-
--	-----	---

<i>Deafness (hearing impairments)<sup>10</sup></i>	1-9	-
--	-----	---

<i>Developmental delay<sup>10</sup></i>	37	-
---	----	---

<i>Emotional disturbance (SBH)<sup>10</sup></i>	1-9	-
---	-----	---

<i>Multiple disabilities (other than deaf-blind)<sup>10</sup></i>	1-9	-
---	-----	---

<i>Orthopedic impairments<sup>10</sup></i>	1-9	-
--	-----	---

<i>Other health impaired - minor<sup>10</sup></i>	1-9	-
---	-----	---

<i>Specific learning disabilities<sup>10</sup></i>	1-9	-
--	-----	---

<i>Speech and language impairments<sup>10</sup></i>	71	-
---	----	---

## Children Facing Economic Hardship

<b>POPULATION UNDER AGE 6<sup>9</sup></b>	<b>6,452</b>	<b>100.0%</b>
---	--------------	---------------

Not economically disadvantaged <sup>9</sup>	2,644	41.0%
---	-------	-------

Household income 100% to 199% FPL (low-income) <sup>9</sup>	1,781	27.6%
---	-------	-------

Household income below 100% FPL (in poverty) <sup>9</sup>	2,027	31.4%
---	-------	-------

<b>ODE - TOTAL CHILDREN COUNTED (AGES 3-5)<sup>4</sup></b>	<b>600</b>	<b>100.0%</b>
--	------------	---------------

Not economically disadvantaged <sup>4</sup>	111	18.5%
---	-----	-------

Household income 100% to 199% FPL (low-income) <sup>4</sup>	226	37.7%
---	-----	-------

Household income below 100% FPL (in poverty) <sup>4</sup>	263	43.8%
---	-----	-------

<b>ODJFS - TOTAL CHILDREN COUNTED (UNDER AGE 6)<sup>5</sup></b>	<b>270</b>	<b>100.0%</b>
---	------------	---------------

Not economically disadvantaged <sup>5</sup>	0	0.0%
---	---	------

Household income 100% to 199% FPL (low-income) <sup>5</sup>	79	29.3%
---	----	-------

Household income below 100% FPL (in poverty) <sup>5</sup>	191	70.7%
---	-----	-------

## Children with Limited English Proficiency

<b>ODE - TOTAL CHILDREN COUNTED (AGES 3-5)<sup>4</sup></b>	<b>615</b>	<b>100.0%</b>
--	------------	---------------

English proficient <sup>4</sup>	615	100.0%
---------------------------------	-----	--------

Limited English proficiency <sup>4</sup>	0	0.0%
--	---	------

<b>ODJFS - TOTAL CHILDREN COUNTED (UNDER AGE 6)<sup>5</sup></b>	<b>1,036</b>	<b>100.0%</b>
---	--------------	---------------

English primary language <sup>5</sup>	1,035	99.9%
---------------------------------------	-------	-------

Non-English primary language eligible <sup>5</sup>	1	0.1%
--	---	------

<i>Non-English primary language utilization<sup>5</sup></i>	1	0.1%
---	---	------

## Kindergarten Readiness

<b>STUDENTS TESTED FOR KRA-L<sup>11</sup></b>	<b>1,140</b>	<b>100.0%</b>
---	--------------	---------------

Students scoring in KRA-L Band 1 <sup>11</sup> (requiring intensive intervention and instruction)	172	15.1%
--	-----	-------

## SELECTED INDICATORS BY SCHOOL DISTRICT, population under age 6

School district	Population under age 6	Economically disadvantaged	ODE spaces	ODE enrollment	ODJFS spaces	ODJFS enrollment
East Muskingum	718	31.6%	58	48	77	61
Franklin	972	53.7%	174	90	0	0
Maysville	725	60.7%	0	109	0	0
Tri-Valley	1,359	36.0%	89	50	100	91
West Muskingum	980	55.9%	86	70	162	165
Zanesville	2,187	82.7%	253	163	676	719

For assistance interpreting the data in this county profile and detailed information about the sources and caveats, please review the [User Guide](#)

## Sources

1. U.S. Census Bureau, Decennial, Census, 2010
2. Ohio Department of Health, Help Me Grow Early Intervention Child Count, July 2012
3. Ohio Department of Education, December, 2011 Child Counts
4. Ohio Department of Education, Spring Fiscal Year, 2012
5. Ohio Department of Jobs and Family Services, November, 2012
6. Ohio Department of Education, Active sites as of January 2013
7. Ohio Department of Education, Preschool Capacity and Enrollment, November 2012
8. Head Start, School Year, 2012-2013
9. U.S. Census Bureau, American Community Survey, 2007-2011, 5-year estimate
10. Ohio Department of Education, School Year 2011-2012
11. Ohio Department of Education, Interactive Local Report Card, School Year 2010-2011
12. U.S. Census Bureau, Intercensal Population Estimates, 2000-2010